



## XG100CE User Guide



# CONTENTS

|   |     |
|---|-----|
| <b>Chapter 1: Introduction</b>                              |     |
| About the Janam XG100CE                                     | 1-1 |
| Hardware features   | 1-1 |
| Hardware overview   | 1-2 |
| <b>Chapter 2: Get Started</b>                               |     |
| Unpack your Janam XG100CE                                   | 2-1 |
| Recommended host computer configuration/requirements        | 2-1 |
| Update your desktop software                                | 2-1 |
| Attach the tether to the stylus and hand strap              | 2-2 |
| Install/Charge the battery                                  | 2-4 |
| Turn on the XG100CE   | 2-6 |
| Understanding the desktop                                   | 2-6 |
| Update your ROM   | 2-7 |
| <b>Chapter 3: Set Up Your Janam XG100CE</b>                 |     |
| Locate front panel controls                                 | 3-1 |
| Locate back panel components                                | 3-1 |
| Recalibrate the screen                                      | 3-1 |
| Use regional and language features                          | 3-2 |
| Open applications   | 3-3 |
| Remove applications   | 3-3 |
| Set display properties                                      | 3-3 |
| Set volume and enable sounds                                | 3-4 |
| Change keypad options                                       | 3-4 |
| Set internet options  | 3-6 |
| <b>Chapter 4: Reset the XG100CE</b>                         |     |
| Soft reset  | 4-1 |
| Hard reset  | 4-1 |
| Clean reset   | 4-1 |
| <b>Chapter 5: Barcode Scanning</b>                          |     |
| Barcode scanning demonstration and setup                    | 5-1 |
| Enable the ScanWedge feature                                | 5-2 |
| Unlock 2D scanning  | 5-2 |
| Enable ScanCapture feature                                  | 5-4 |
| <b>Chapter 6: Enter Data</b>                                |     |
| Use the stylus or touch screen with the onscreen keyboard   | 6-1 |
| Import data   | 6-2 |
| Use the barcode scanner                                     | 6-2 |
| <b>Chapter 7: Exchange and Update Data using ActiveSync</b> |     |
| Create a user profile                                       | 7-1 |
| Set up/delete a partnership                                 | 7-1 |
| Partnership settings  | 7-4 |
| <b>Chapter 8: 802.11 Wireless Configuration</b>             |     |
| Wireless local area network access                          | 8-1 |

|  |      |
|--|------|
| <b>Chapter 9: Bluetooth Manager</b>                          |      |
| Start Bluetooth Manager                                      | 9-1  |
| Scan device  | 9-1  |
| Device pairing   | 9-1  |
| File transfer  | 9-2  |
| Object push  | 9-3  |
| Exit Bluetooth application                                   | 9-3  |
| Serial Bluetooth   | 9-4  |
| Dial-up networking   | 9-5  |
| Bluetooth toolbar  | 9-7  |
| <b>Chapter 10: Regulatory and Maintenance</b>                |      |
| Regulatory and safety approvals                              | 10-1 |
| FCC and Canadian compliance                                  | 10-1 |
| XG Series RF terminals with 802.11b/g and Bluetooth          | 10-1 |
| RF, regulatory and safety approvals                          | 10-3 |
| Other electrically powered devices                           | 10-3 |
| Care and cleaning of terminals                               | 10-3 |
| For European community users                                 | 10-3 |
| Waste electrical and electronic equipment (WEEE) information | 10-3 |
| Battery warning  | 10-4 |

---

## Introduction

Janam's XG100CE Series has been optimized to meet the unique requirements of mobile workers in warehouses, distribution centers, loading docks and other operating venues where rugged gun-shaped mobile computers are deployed. While its center-weighted ergonomic design makes it uniquely balanced and light, the Microsoft Windows-based XG100CE is a powerful workhorse that delivers state-of-the-art computing performance in an exceptionally rugged package. Designed for the work at hand, the XG100CE delivers superior performance and flexibility at a great price.

### About the Janam XG100CE

The XG100CE has a light, sleek, highly-functional form factor for intensive barcode scanning. Its unique, center-weighted ergonomics, with battery positioned in handle, make it feel remarkably light and balanced in the hand. It features a color, quarter-VGA display, Marvell XScale PXA320 624MHz processor and robust 802.11 b/g Summit WLAN radio with Cisco's CCX v4 support. It has an extra-wide keypad area with large, easily-depressed buttons and superior backlighting. The XG100CE meets IP64 sealing requirements, withstands multiple 6' drops to concrete on all sides across wide temperature range and survives 2,000 tumbles in a rotating test chamber.

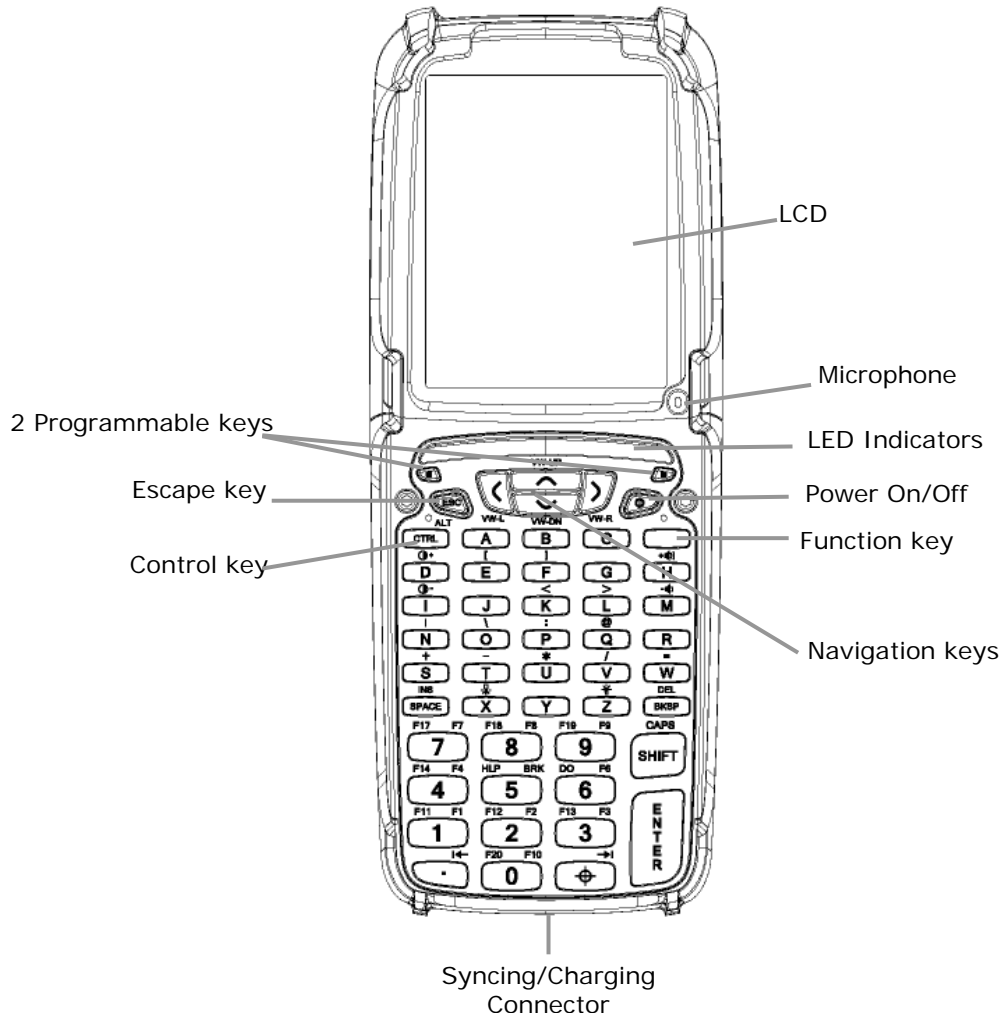
Further enhancing its value, the XG100CE features integrated 1D barcode scanning as well as built-in 2D barcode scanning capability. Janam's 2D scanning solution enables users to upgrade barcode scanning capability from 1D to 1D/2D on any device at any time with a simple firmware upgrade. With **Adaptus® Imaging Technology**, the XG100CE easily reads all types of barcode symbologies including linear, stacked and 2D. It offers the flexibility to adapt as business needs change, without the need to invest in new hardware.

### Hardware Features

- Microsoft® Windows® CE 6.0
- Full 3.7" color display
- High-performance 1D and 2D barcode scanning capability
- Extra-wide keypad area with large, easily-depressed buttons and superior backlighting
- Emulator keypads insuring compatibility with existing installations
- Vibrator alert for successful scan feedback
- Bright-LED tail lights for visual feedback during overhead scanning
- Superior audio performance and VOIP-ready
- Integrated Electronic Article Surveillance (EAS) tag for enhanced asset protection
- 256MB DDR SDRAM/ 256MB NAND Flash ROM
- NAND flash backup of OS, applications and user data
- User accessible microSD card slot
- Sealed to IP64 standards
- Rugged design: Withstands multiple 6' drops to concrete on all sides across wide temperature range and 2,000 tumbles in a rotating test chamber.
- Enterprise-class WLAN with WPA security protocols
- Bluetooth v2.0
- Full system of accessories

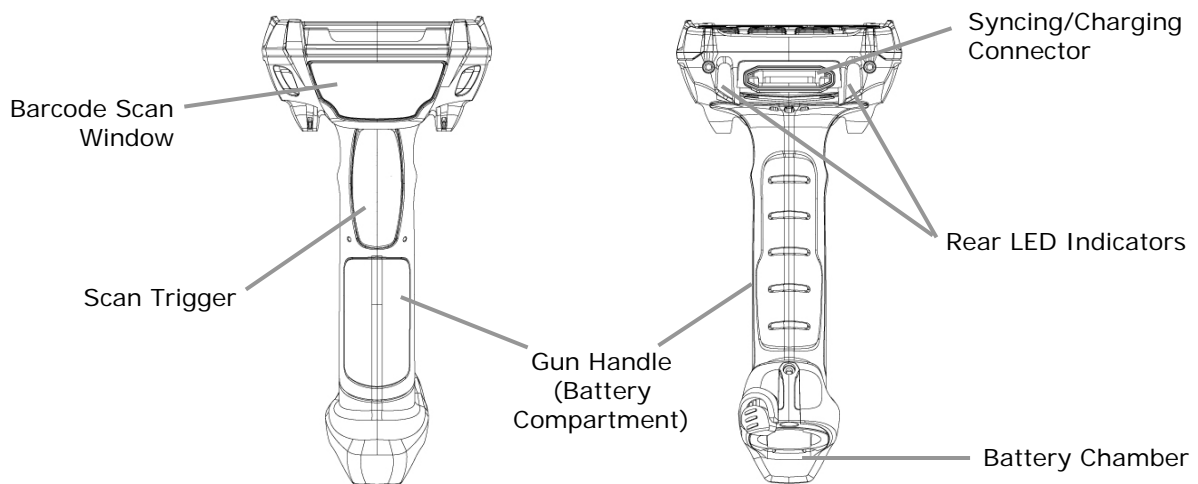
## Hardware Overview

Top View

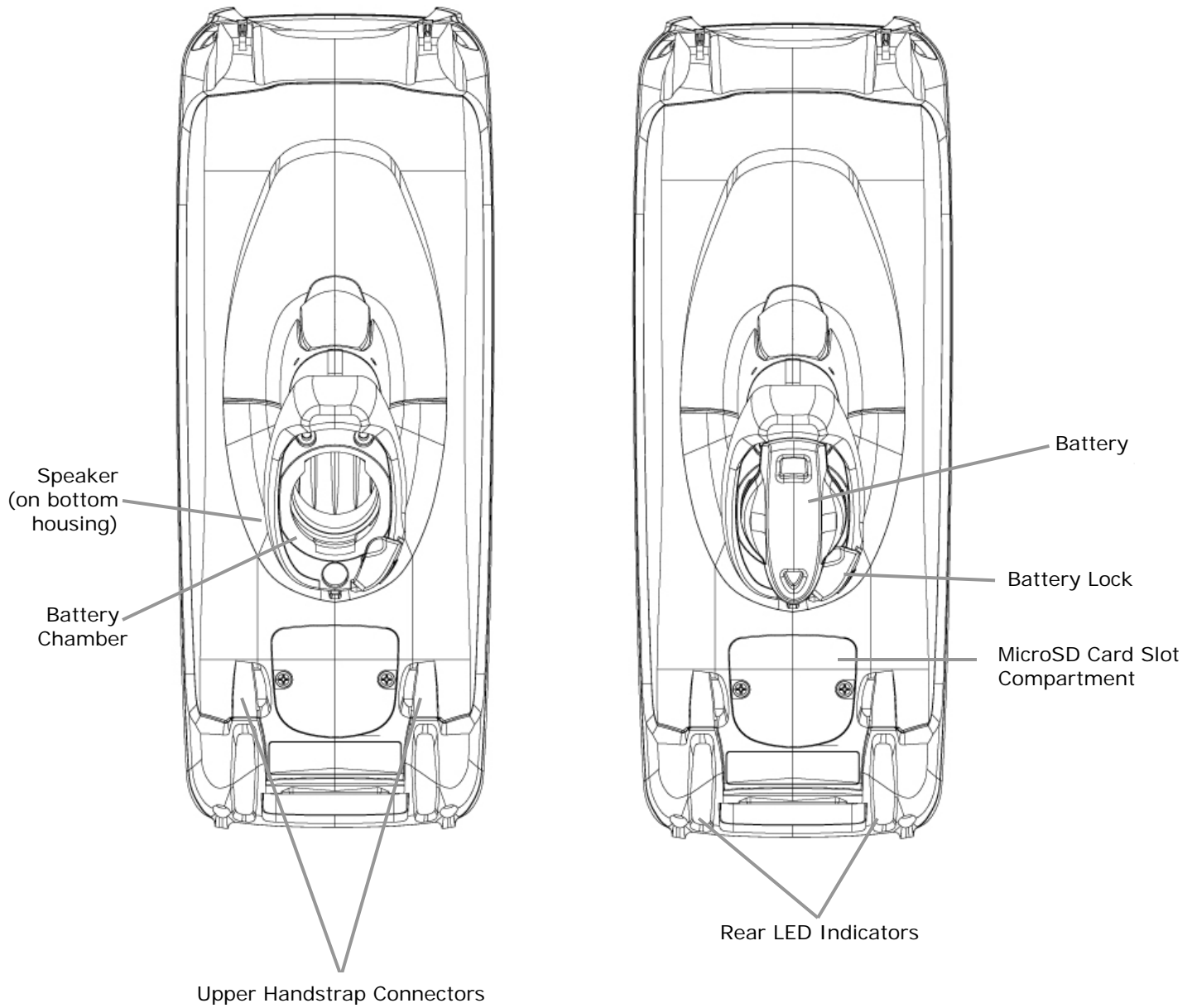


Front View

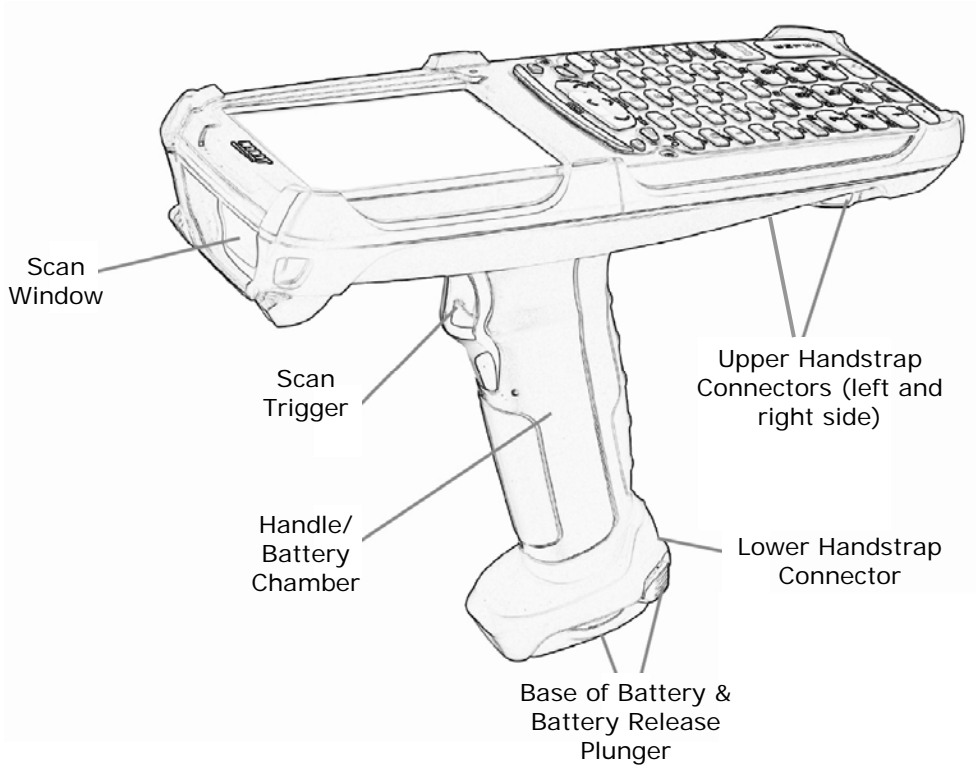
Rear View



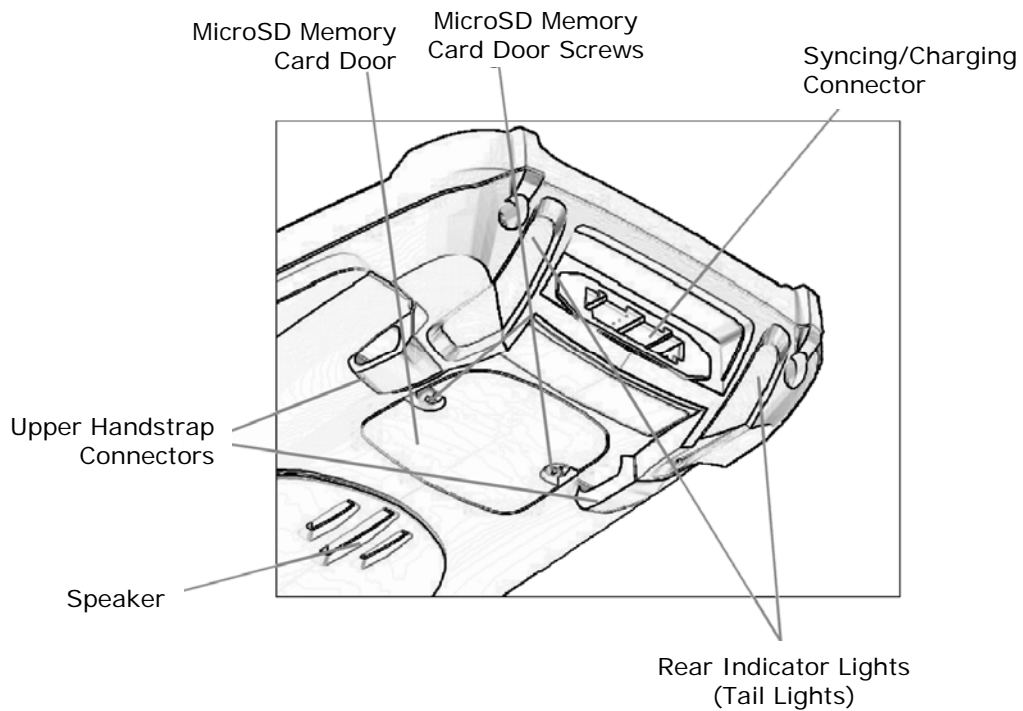
Bottom View



Side View



Rear-Bottom Sectional View



## Get Started

### Unpack your Janam XG100CE

Make sure you have the following:

- Janam XG100CE mobile computer
- Janam authorized battery
- Handstrap
- Stylus
- Stylus tether
- Charging accessory (one of the following kits ordered/packed separately):
  - Single-slot cradle kit
  - Four-slot cradle kit
  - USB cable with AC adapter
  - Serial cable with AC adapter

### Recommended Host Computer Configuration/Requirements

- IBM-compatible host computer with Pentium 450 MHz processor or higher
- Microsoft Windows XP or Microsoft Windows 2000 operating system
- 128 MB RAM
- 100 MB available hard disk space
- One available serial or USB port
- Mouse

### Janam XG100CE SDK

The Janam XG Series Software Development Kit enables programmers to develop applications for Janam XG Series rugged mobile computers running the Microsoft® Windows® CE 6.0 operating system. It contains all necessary details and instructions for developing applications that access Janam XG Series libraries, including scanning, imaging and hardware utilities.

The development kit, which can be downloaded from Janam's Partnerzone site (login required) is designed for use with Microsoft® embedded Visual C++ 4.0 (*SP4 or above*) or Microsoft Visual Studio 2005.

### Update your Desktop Software

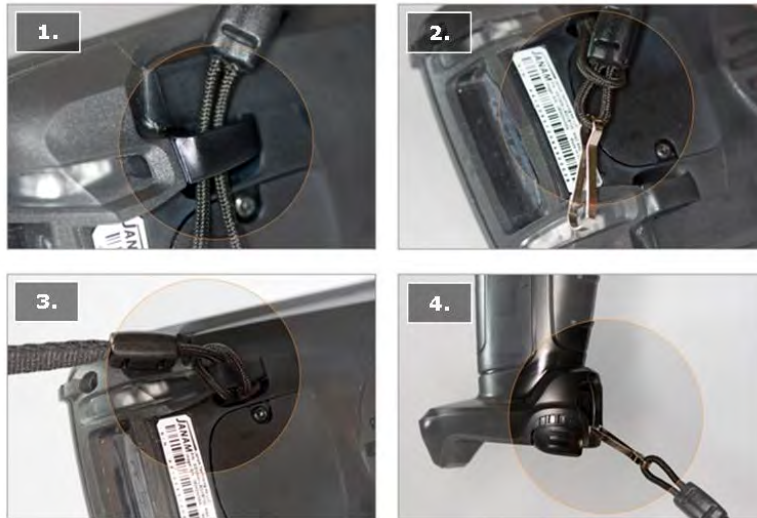
Microsoft ActiveSync 4.5 or later software is available at the Microsoft web site at

<http://www.microsoft.com>



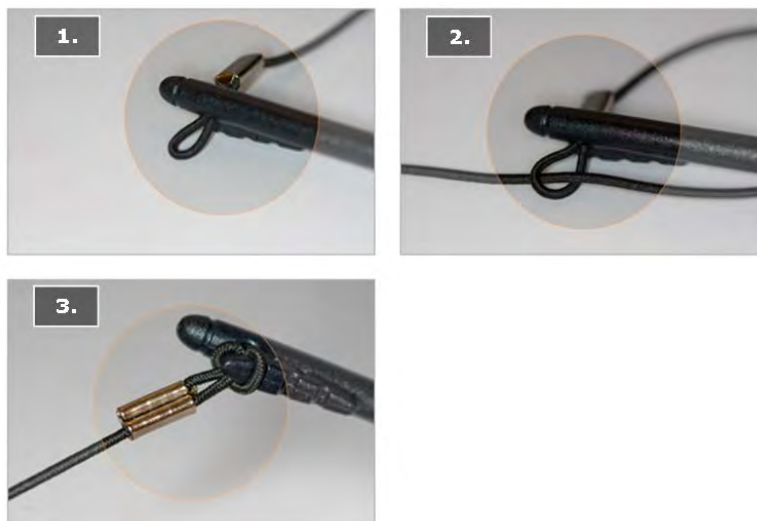
### Attach the Handstrap to the XG100CE

1. Push the long-looped end of the handstrap through the left- or right-side upper handstrap connector (at the back of the handheld).
2. Push the metal hook (the other side of handstrap) through the loop that comes through the upper handstrap connector in step 1.
3. Pull the entire length of the handstrap through the loop to fasten one end of the handstrap to the device.
4. Clip the metal hook to the lower handstrap connector (near the base of the handle).



### Attach the Stylus Tether to the Stylus

1. Push one looped end of stylus tether through the hole at the top of the stylus.
2. Pull the other end of the stylus tether through the first looped end.
3. Pull the entire length of the stylus tether including the silver grommet all the way through the loop to fasten and secure the tether to the stylus.



### Attach the Stylus Tether to the Handstrap

1. Push the loop of the loose end of the stylus tether through one of the slits in the handstrap adjustment slider.
2. Push the stylus (now attached to the stylus tether) through the stylus tether's loop that comes through the slit on the adjustment slider.
3. Pull the entire length of the stylus tether and the stylus tether's silver grommet all the way through the loop to secure the stylus tether to the handstrap's adjustment slider.
4. When not in use, the stylus can be inserted in the stylus pouch on the handstrap.



## Install the Battery

### IMPORTANT Battery Warning!

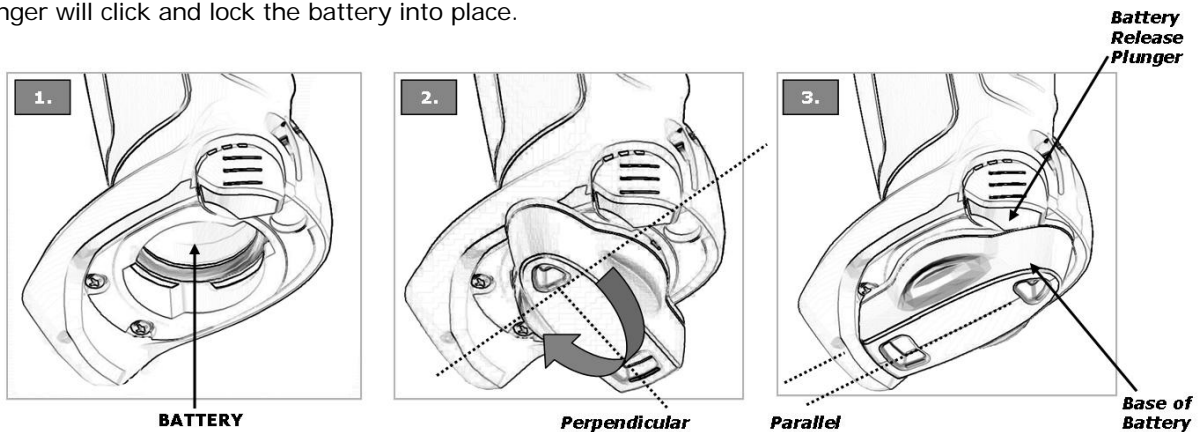
**CAUTION:** Use only Janam-approved batteries.

There is the risk of explosion if battery is replaced by an incorrect type.

Always dispose of used batteries according to the instructions.

### INSTALLING THE BATTERY:

1. Insert the top of battery into chamber opening and gently slide battery into battery chamber.  
Do not force past point of resistance.
2. Turn the battery so that the base of the battery is perpendicular to the device handle.  
This aligns the battery notches with the battery chamber which is required to insert the battery. Once the battery is properly aligned with the handle, press the battery into the battery chamber.
3. Turn the battery base clockwise until the base of the battery is parallel with the device. The battery release plunger will click and lock the battery into place.



### REMOVING THE BATTERY:

1. To remove the battery, fully press the battery release plunger and hold while rotating the battery counter-clockwise until it stops (battery base will be perpendicular to device handle).
2. Grip the battery base and pull battery from battery chamber.

### CHARGING THE BATTERY:

**Important Note:** The backup battery must charge at a low current. Initial charge-time for the backup battery, therefore, is 72-hours. During this period, even though the main battery may indicate full charge, the device cannot maintain any user data if the main battery is removed. The initial 72-hour charge-time for the backup battery is required prior to first use or after a full drain of the backup battery.

Full drain of the backup battery will occur when:

- The main battery is removed and the device uses the backup battery to sustain its last state of operation for 15 minutes or more.
- The main battery's charge drops below 7% (the backup battery will support continued function for up to 15 minutes).

To charge the battery using the **USB Syncing/Charging Cable** or **Serial Syncing/Charging Cable**:

1. Connect the power supply to the USB or serial syncing/charging cable.
2. Connect snap-on end of USB or serial syncing/charging cable to syncing/charging connector at the bottom of device, making sure the JANAM logo on the connector faces up.
3. Insert appropriate AC adapter and plug in the power supply. Use only easily accessible wall outlets that are easily reached with the length of supplied power cable.

To charge the battery using the **Single-Slot** or **Four-Slot Cradle**:

1. Connect the power supply to the cradle.
2. Connect the line cord to the power supply.
3. Insert appropriate AC adapter and plug in the power supply. Use only easily accessible wall outlets that are easily reached with the length of supplied power cable.
4. Place the device in cradle. The LED will illuminate to confirm connection (orange indicates charging, green indicates fully charged and red indicates fault).
5. The battery is fully charged in approximately 5 hours.
6. For **Single-Slot cradle only**: Charge a spare battery by placing the battery in the spare battery well with connectors lined up. An LED will illuminate to confirm connection.

### Charging a Spare Battery in Single-Slot Cradle Spare Battery Well or Four-Slot Battery Charger

1. Insert and slide the battery into the charging slot as shown.
2. Press down and forward with index finger to fully seat the battery.
3. The LED will illuminate to confirm connection (orange indicates charging, green indicates fully charged and red indicates fault).
4. The battery is fully charged in approximately 5 hours.



### Turn the XG100CE on

After batteries have been charged for required length of time, press the red power button located on the keypad to the right of the up/down/left/right arrow keys.

The first time the device is turned on, calibrate the screen using the stylus. To calibrate, simply follow the on-screen instructions and remember to save your settings.

**Note:**

If your XG100CE came pre-loaded with a custom software application, a welcome utility may not appear. If this happens, follow the on-screen instructions.

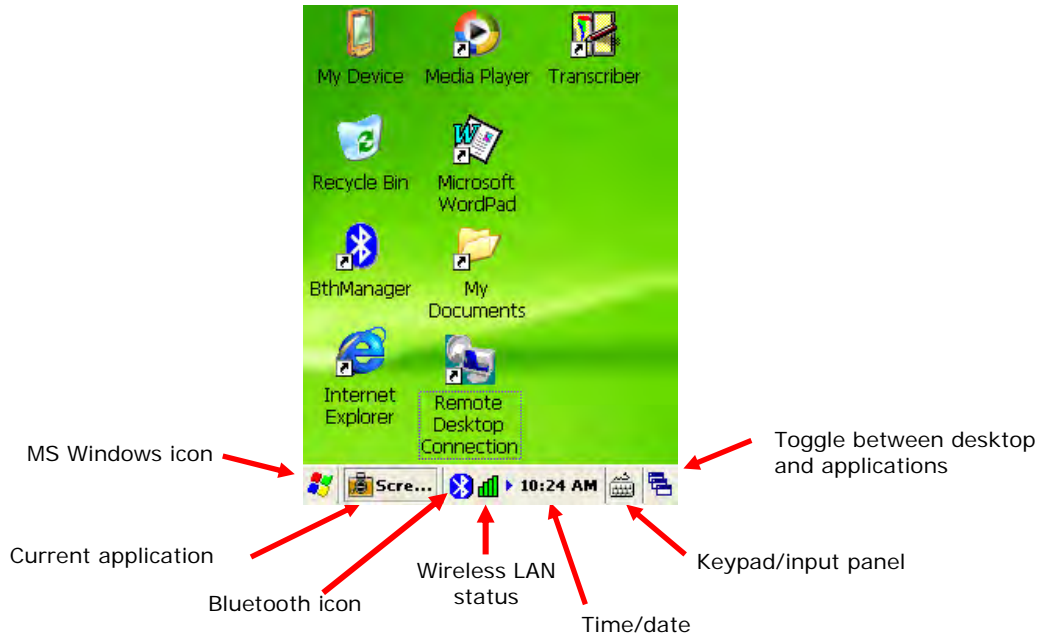
Press & hold stylus on the center of the target. Repeat as the target moves around the screen.



## Understanding the Desktop

### Command bar

Your XG100CE mobile computer desktop includes a command bar with the following features.



## Set up your Janam XG100CE

### Locate Front Panel Controls

1. **Power button** - Pressing the power button turns the handheld computer on (if it is off) and returns to the last screen that was displayed. Press the power button to turn the handheld computer off.
2. Use the **backlight** to illuminate the screen in low-light conditions.  
For 52-Keypad: Press Orange (Function) key and then press "Z" key to turn display backlight on/off.  
For 42-Keypad: Press Orange (Function) key and then press "N" key to turn display backlight on/off.
3. Use the **keylight** to illuminate the keypad.  
For 52-Keypad: Press Orange (Function) key and then press "X" key to turn keylight on/off.  
For 42-Keypad: Press Orange (Function) key and then press "M" key to turn keylight on/off.
4. Janam XG100CE **LCD** displays the applications and data stored in your handheld computer. It is touch-sensitive.

### Locate Back Panel Components

1. **microSD Card Slot (located under microSD card cover)**. Remove 2 screws using cross head screwdriver. Remove the cover and insert a microSD card into the slot. Replace card slot cover.
2. **USB/serial connector**. Connects your handheld computer to a PC via a sync/charging USB cable or by inserting XG100CE into a Janam cradle.

### Important:

**Always use the stylus for tapping or making strokes on the handheld computer screen. DO NOT use a pen, pencil or any other object on the touch screen of the XG100CE.**

### Recalibrate the Screen

The first time you start the Janam XG100CE handheld computer, setup instructions will appear on screen. These instructions include a calibration screen, or digitizer. Calibration aligns the internal circuitry of the handheld computer with its touch-sensitive screen so the handheld can detect tapping selected elements on the screen. You can also recalibrate your screen at any time.

#### To recalibrate your screen:

1. Tap **Start > Settings > Control Panel > Stylus**.
2. Select **Double-Tap** tab and follow the instructions.
3. Tap **Calibration** tab and follow the instructions, tapping the screen where indicated

## Use the Regional and Language Features

The Janam XG100CE comes with a number of regional, language and input settings. These settings can be changed.

**Note:**

If you change to a language other than English, you will have to perform a hard reset which will erase all data on your handheld computer. If you have data you need to save, perform an ActivSync operation before you change languages.

**To update the regional settings:**

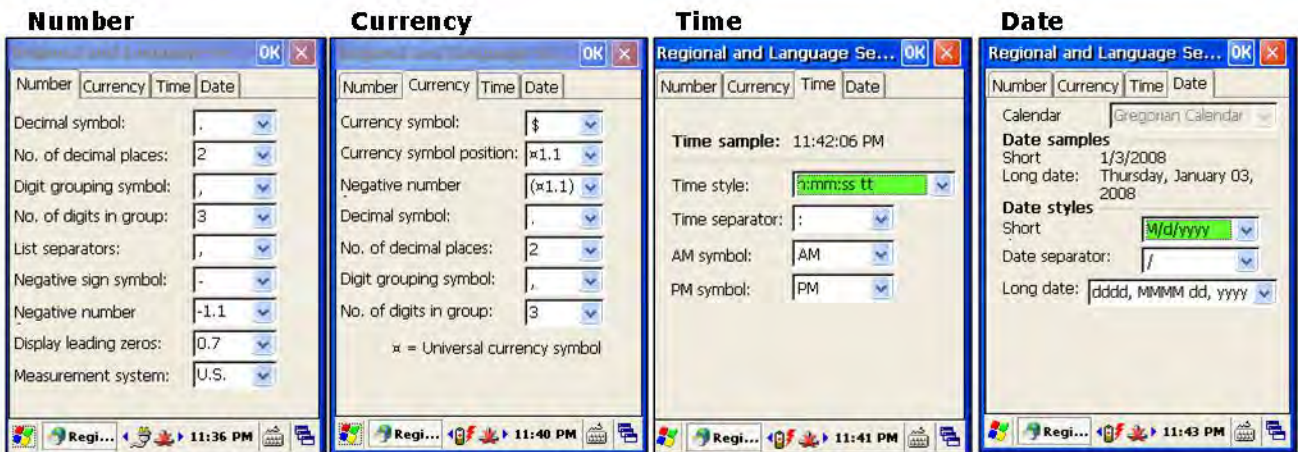
1. Tap **Start > Settings > Control Panel**.
2. Tap **Regional Settings**.
3. Change Your Locale using the dropdown menu and tap **OK**.

**To set date, time and time zone preferences:**

1. Tap **Start > Settings > Control Panel**.
2. Tap **Date/Time**.
3. Select proper time and time zone and tap **OK**.

**To format numbers, currency, time and date:**

1. Tap **Start > Settings > Control Panel**.
2. Tap twice on **Regional Settings**.
3. In the region tab, tap **Customize**.
4. Using the dropdown menus make your changes and tap **OK**.



## Open Applications

Use the Start icon in the left corner of the command bar to open applications on your handheld computer.

### To open an application:

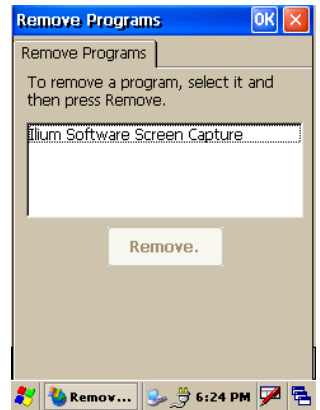
1. Tap **Start > Programs**.
2. Select the application you want to open from the menu.



## Remove Applications

### To remove a program:

1. Tap **Start > Settings > Control Panel**.
2. Double-tap **remove programs** icon.
3. Select the program you want to delete and click **remove**.
4. Click **OK**.

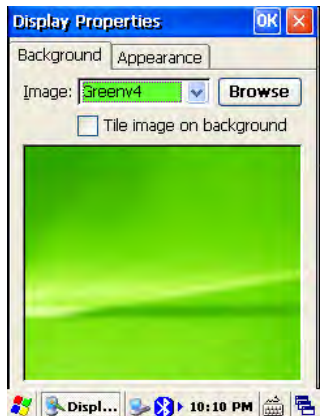


## Set the Display Properties

You can easily change the display background and appearance.

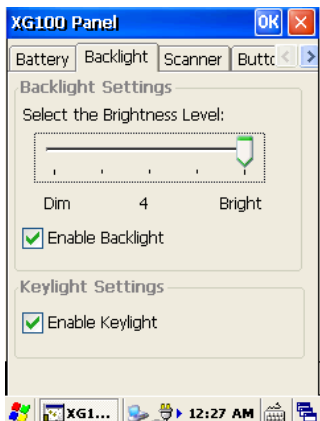
### To change the background:

1. Tap **Start > Settings > Control Panel**.
2. Double-tap **Display** icon.
3. Use the dropdown menu or tap browse to change the display background.
4. Click **OK**.



### To change backlight preferences:

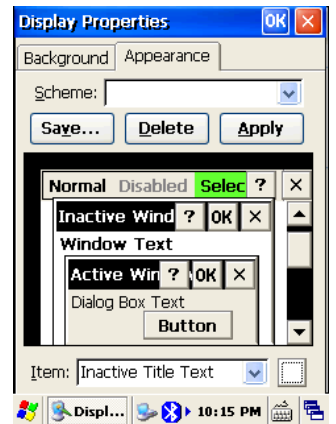
1. Tap **Start > Settings > Control Panel**.
2. Tap **YG100CE Panel** icon.
3. Select **Backlight** Tab.
4. Adjust Brightness by moving slider with the stylus or using the LEFT or RIGHT arrow keys.
5. To disable the backlight, uncheck the "Enable Backlight" box.





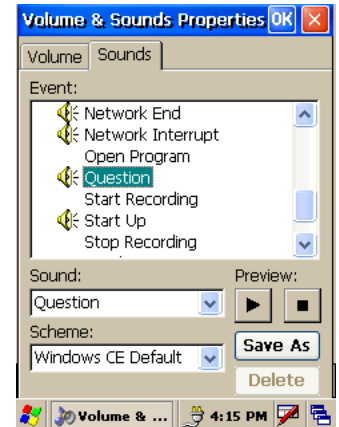
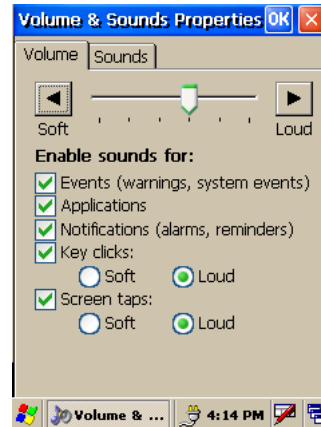
**To change the appearance:**

1. Tap **Appearance** Tab.
2. Double-tap **Display** icon.
3. Use the dropdown menu to change the scheme.
4. Click **OK**.



**Set Volume and Enable Sounds**

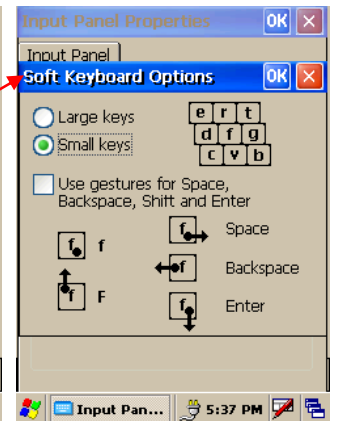
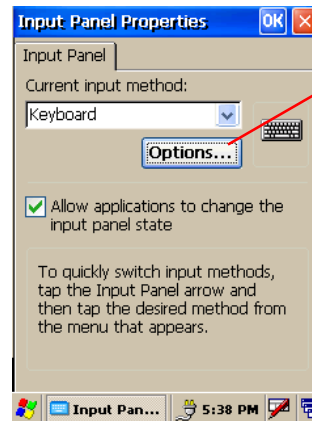
1. Tap **Start > Settings > Control Panel**.
2. Double-tap **Volume and Sounds** icon.
3. Tap the **Volume** tab and choose volume level and preferences.
4. Click **OK**.
5. Tap the **Sounds** tab and select sounds to activate. You may use the **Preview** function to sample any sound.
6. Click **OK**.



**Change Keypad Options**

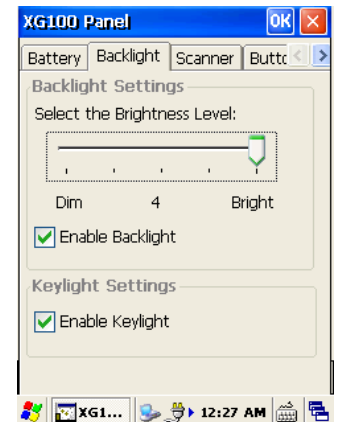
**To change key size on soft keyboard:**

1. Tap **Start > Settings > Control Panel**.
2. Double-tap **Input Panel** icon.
3. Select **Options** on the input panel.
4. Click on **Large keys** (or **Small keys**).
5. To **Use gestures** for Space, Backspace, Shift and Enter, click that box to get a check and **note the gesture styles** to use for each.



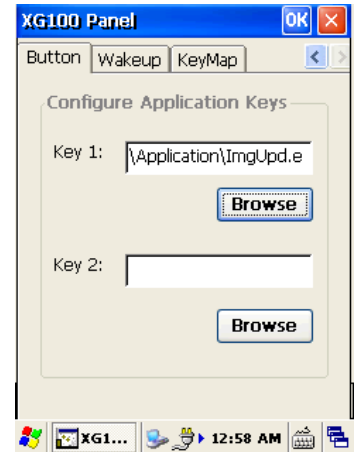
**To change keylight preferences:**

1. Tap **Start > Settings > Control Panel**.
2. Tap **XG100CE Panel** icon.
3. Select **Backlight** Tab.
4. To disable the keylight, uncheck the "Enable Keylight" box.



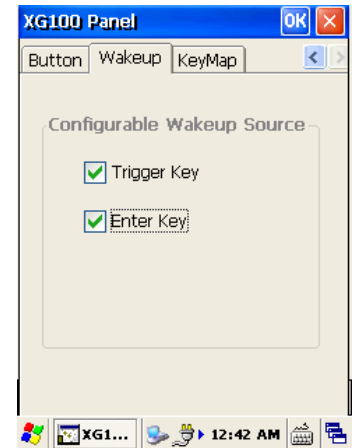
**To assign applications to the Programmable Keys**

1. Tap **Start > Settings > Control Panel**.
2. Tap **YG100CE Panel** icon.
3. Select **Button** tab.
4. Tap the **Key 1** or **Key 2** field box you wish to assign an application.
5. Tap **Browse** and locate the appropriate executable file.
6. Click **OK**.



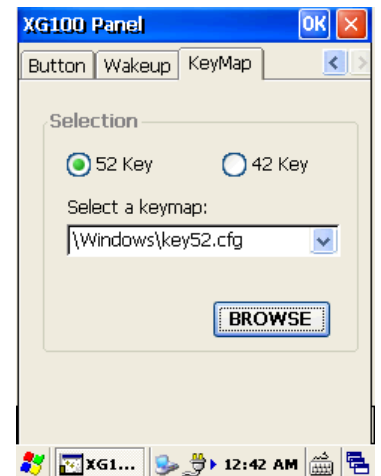
**To select Wakeup sources**

1. Tap **Start > Settings > Control Panel**.
2. Tap **YG100CE Panel** icon.
3. Select **Wakeup** tab.
- 4a. To have the Trigger Key wakeup the device from a suspend mode, check the **Trigger Key** box.
- 4b. To have the Enter Key wakeup the device from a suspend mode, check the **Enter Key** box.
5. Click **OK**.



**To change the KeyMap preference**

1. Tap **Start > Settings > Control Panel**.
2. Tap **YG100CE Panel** icon.
3. Select **KeyMap** tab
4. Depending upon your keypad configuration, select either **52 Key** or **42 Key**.
5. Select one of the default keypad files OR one that is preloaded by your installed application.
6. Click **OK**.



## Set Internet Options

1. Tap **Start > Settings > Control Panel**.
2. Double-tap **Internet Options** icon.
3. There are six tabs for Internet options to enable you to customize the XG100CE to meet network requirements.
  - a. **General** – to select your start page, search page and user agent. You can also clear cache and delete history from this tab.
  - b. **Connection** – to set the parameters for online access.
  - c. **Security** – provides intranet, Internet, trusted and restricted sites access, including Active X controls and plug-ins.
  - d. **Privacy** – offers a way to accept, block or prompt for first- and third-party cookies.
  - e. **Advanced** – to set parameters for accessibility, browsing, multimedia, TV features and security options.
  - f. **Popups** – to block popups, set exceptions and enable advanced event options.



## How to Reset the XG100CE

### Reset the XG100CE

#### To soft reset:

In most situations, a **soft reset** restarts the device and saves all stored records and entries. However, any data that has not been saved will be lost during a soft reset. To perform a soft reset, do the following:

1. Press the **trigger** and the **ESC** key at the same time and release.
2. The Janam logo will appear followed by Microsoft Windows screen.

#### To hard reset:

A **hard reset** restores the XG100CE, and removes ALL applications and data in volatile memory. Be sure that all data is backed up before performing a hard reset.

To perform a hard reset, do the following:

1. Press and hold the **CTRL key, BKSP key and the trigger**.
2. Wait for 5 seconds, then release all three.
3. Press the **Power key**.

#### To clean reset:

A **clean reset** returns the XG100CE to factory settings, removing ALL applications and data from the device. Be sure that all data is backed up before performing a clean reset.

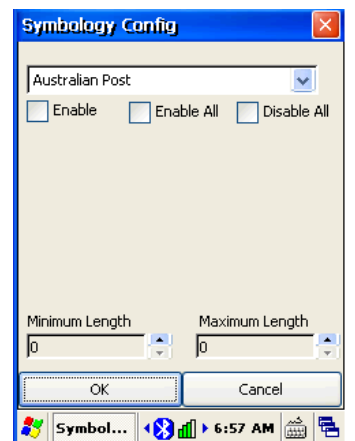
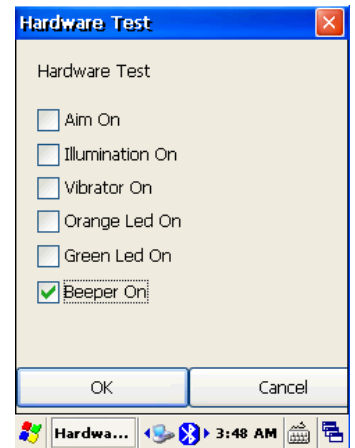
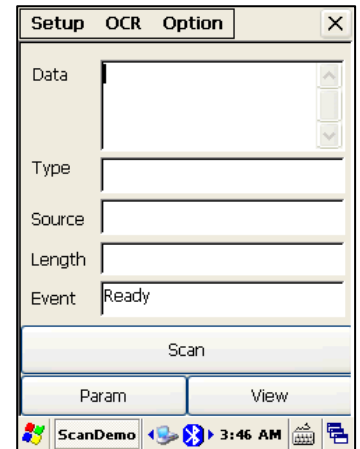
1. Press and hold the **CTRL key, BKSP key and the trigger**.
2. Wait for 5 seconds, then release all three.
3. Press the **Power key**.
4. When Janam logo appears, **press and hold CTRL and the ORANGE key** until calibration screen appears.
5. Calibrate unit.

## Barcode Scanning

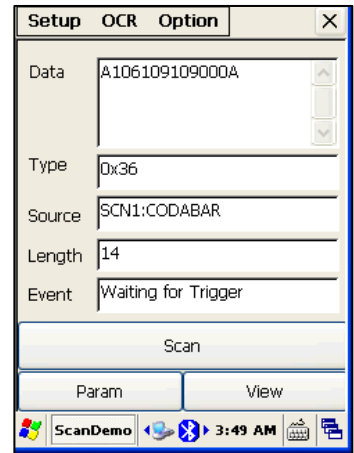
### Barcode Scanning Demonstration and Setup

**To run the demo:**

1. Tap the **Start > Programs > Scan > ScanDemo**.  
Three menus will appear (Setup, OCR, Options) on the top of the screen.
2. To review all the scanning functions to check that everything is working properly In the **Setup** menu, select **Hardware Test**.
3. Select **each item** to verify that all hardware is working properly.
4. Tap **OK** to return to the main demo.
5. Select **Setup > Symbology Config**.
6. Tap **Enable All** to enable all types of barcodes or select only the barcode symbologies you need.
7. Tap **OK** to save.



8. Select **Scan**.
9. Point the barcode scan window at a barcode, and press the **scan trigger** on the XG100CE.

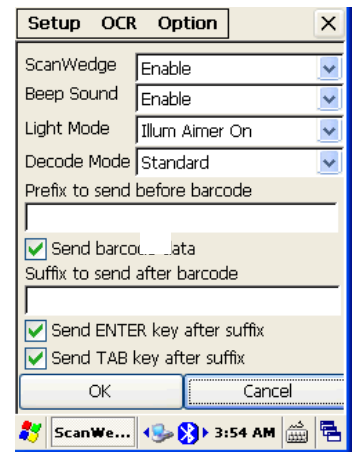


### Enable the ScanWedge Feature

When the ScanWedge feature is enabled, data can be entered into an application by opening the application on the handheld and scanning a barcode.

1. Go to **Start > Programs > Scan > ScanWedge**.
2. Select **Enable** from the *ScanWedge* menu.
3. Choose **Setup > Symbology Config** from the top menu. You can then select **enable all** to enable all types of barcode or select only the barcode symbologies you need.
4. Tap **OK**.

**Note:** The ScanWedge function will be disabled if manual scanning is initiated either by a command API or by using the Janam Barcode Test program.



### Unlock 2D Scanning

All of Janam’s mobile computers can be upgraded in the field to read both 1D and 2D barcodes with a simple firmware upgrade (Part Number 2D-XP-1). With each upgrade, a key code is provided that unlocks 2D scanning capability on the device. To purchase an upgrade for your XG100CE, contact your authorized Janam dealer.

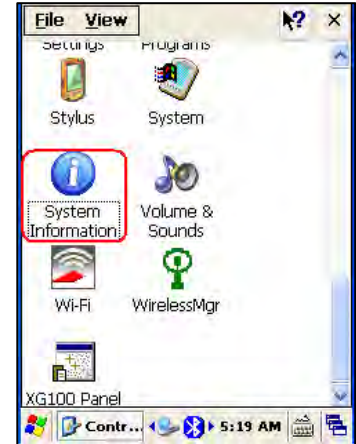
You will need to provide the product imager ID number so the appropriate six-digit key code sequence can be assigned. To access the imager ID number, follow these steps:

**To get your imager ID number:**

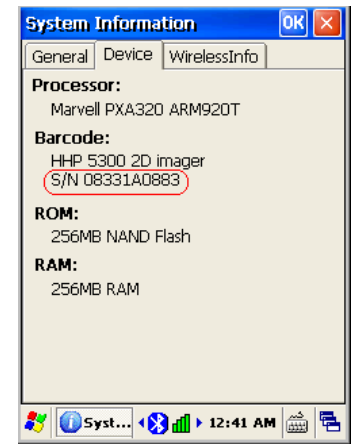
1. Tap the **Start > Settings > Control Panel**.



2. Select **System Information**.



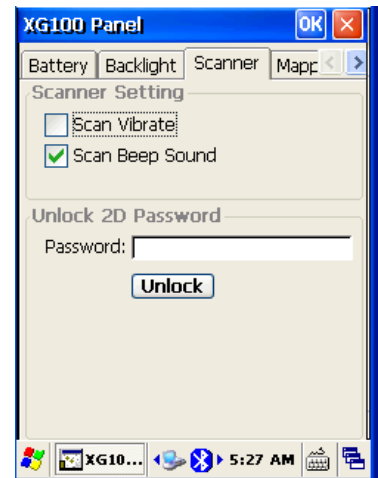
3. To receive the 2D unlock code, this number must be provided. Select the **Device** tab.
  - The scanner ID info (Serial Number, S/N) is a unique number for each XG100CE device.
4. Record the S/N.



After receiving your six-digit key code, follow these steps **to enable 2D scanning**.

1. Go to the **Start > Settings > Control Panel**.
2. Tap **XG100CE Panel** icon.
3. Select **Scanner** tab.
4. Enter your **six-digit key code > Unlock**.
  - A *successful unlock* notification will appear.
5. Press **X** to close the screen.

**Note:** Remember to keep a record of your six-digit key code. The unlock code will be maintained in the unit's system after a soft reset or a hard reset, but it will need to be re-entered after a clean reset.



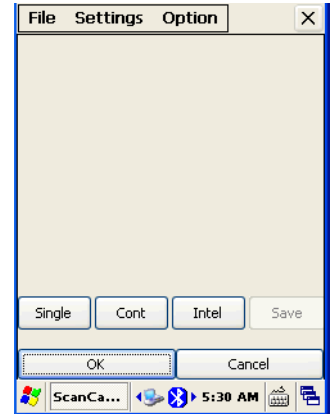
## Enable ScanCapture Feature

The ScanCapture demo enables you to capture images in three ways:

- a) Single to capture a single image
- b) Cont. to capture multiple images, video style
- c) Intel for intelligent signature capture.

### To take a single image:

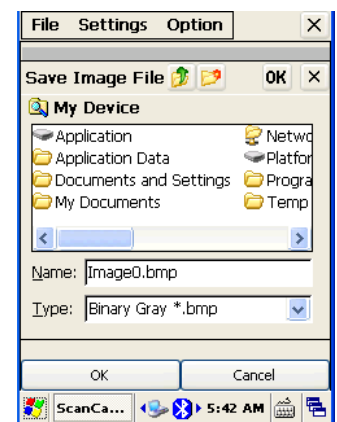
1. Select **Single**.
2. Aim the XG100CE at the subject, hold the device steady and press the **Single** button. The unit will function as a digital camera and take a single picture.



3. A preview appears on the screen.
4. Click **Save**.



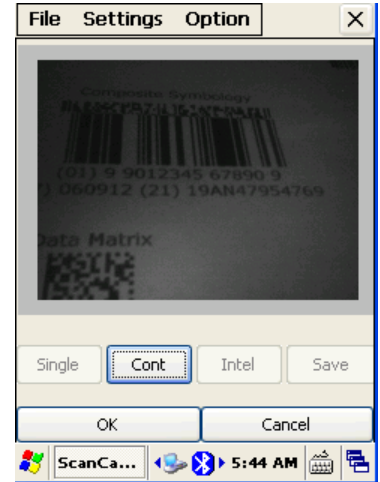
5. Enter a name for the image and select a folder to save it in.
6. Click **OK**.
7. Below is the image that is captured.





**To use continuous preview:**

1. Select **Cont** or continue button.
2. Aim the XG100CE at the subject, hold the device steady and press the **Cont** button. This will start video record.
3. Press the **Cont** button again to stop video recording and display a single image.
4. Click **Save**.
5. Enter a name for the image and select a folder to save it in.
6. Click **OK**.

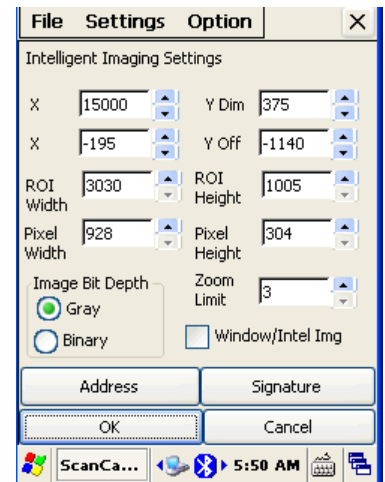


**To use intelligent capture:**

This function is designed to work with a custom barcode for Intelligent Signature Capture. A code 128 barcode is used to inform the device that a signature is to be captured. The Intelligent Signature feature will find the barcode in the image, scale it, remove the extra information, and display the signature on the screen.

When using the Intel Imaging function, there are a number of settings available. The main settings include the ROI Width and Height. ROI stands for Region Of Interest. This is the subset of the complete image that will be extracted. Another field is Image Bit Depth, which can be Gray or Binary. If Binary is selected, the returned image will be black and white. This results in the smallest image size, but the lowest image quality. If Gray is selected, the image will be in 256 levels of gray. This provides higher image quality and a larger image size.

1. Go to **Settings > Intel Img**.
2. Click **Address or Signature > OK**.



3. Select **Intel button** and **aim** at any support barcode.
4. Press the Intel button to capture the image.

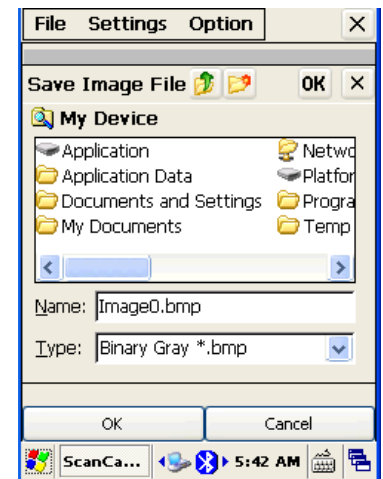
**Note:**

If you need to capture a 2D barcode, be sure to unlock your 2D feature.

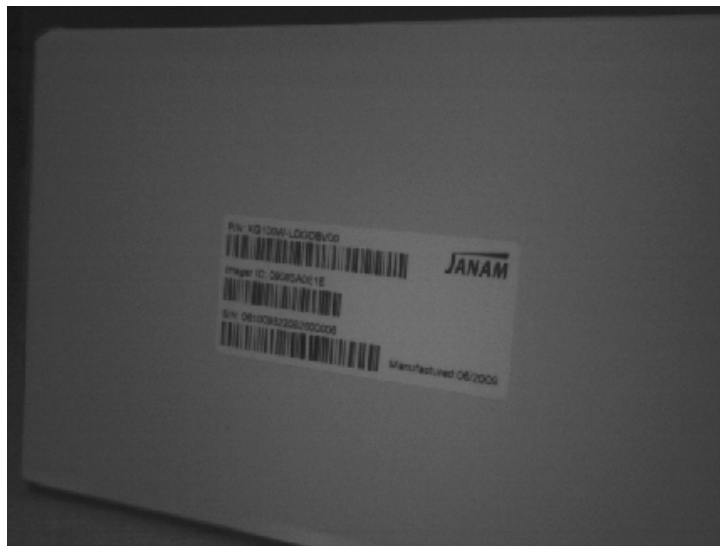
5. Select **Save button**.



6. Enter **image name** and **save** to appropriate folder.
7. Click **OK**.



8. The below image is captured.



## Enter Data

You can enter data into your Janam XG100CE handheld computer by using the keypad, touch screen (with the onscreen keyboard) or by scanning barcodes.

### Use the Touch Screen with the Onscreen Keyboard

#### Important

Always use the stylus for tapping or making strokes on the handheld computer screen. DO NOT use a pen, pencil or any other object on the touch screen of the XG100CE.

#### To access the onscreen keyboard:

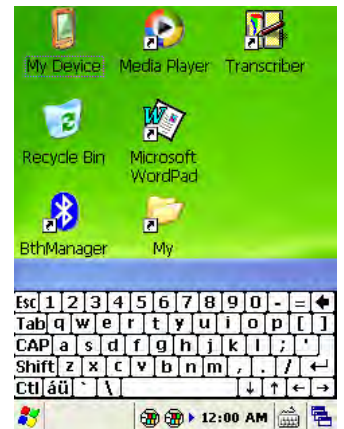
1. From the desktop or any open **application**, tap the **Keyboard** icon in the command bar.



2. Tap **Keyboard** from the popup menu and a check will appear to the left.



3. The keyboard appears on the desktop or application (shown at right), and the keyboard icon changes.



#### To close the onscreen keyboard:

1. Select the **keyboard** icon again and tap **hide input panel**.

**To change input panels:**

1. The standard alpha keyboard is the default.
2. For numeric, tap **123 key** in the lower left corner of the main keyboard.
3. For international, tap **áü key**, directly to the right of 123.

**Alpha**



**Numeric**



**International**



**Import Data**

If you have data stored in computer applications such as spreadsheets and databases, or if you want to import data from another device, you can transfer the data to your Janam XG100CE handheld computer without having to key it in manually. See chapter 6 for details on how to transfer files and applications.

**Use the Barcode Scanner**

You can also enter data by scanning barcodes into the handheld computer. See chapter 5 for details.

## Exchange and Update Data using ActiveSync

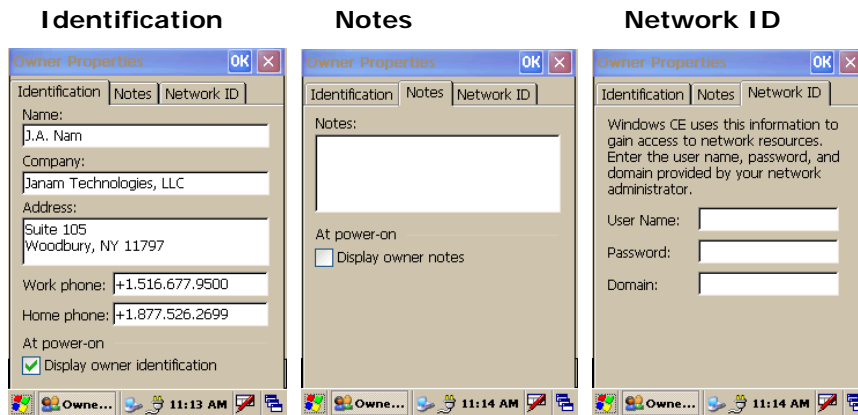
ActiveSync software lets you synchronize data between an XG100CE and a PC. To synchronize data, you must connect your Janam XG100CE and PC directly, place your handheld computer in the cradle attached to your computer, use a modem or use a network.

### Create a User Profile

You can create a user profile to load data into a Janam XG100CE without associating that data with a user name. If you didn't set up a user profile in chapter 4, follow the instructions below.

#### To create a user profile:

1. Tap **Start icon > Settings > Control Panel**.
2. Choose **Owner** icon.
3. Enter **identification, notes** and **network ID** information.
4. Tap **OK** to save changes.



### Set Up/Delete a Partnership

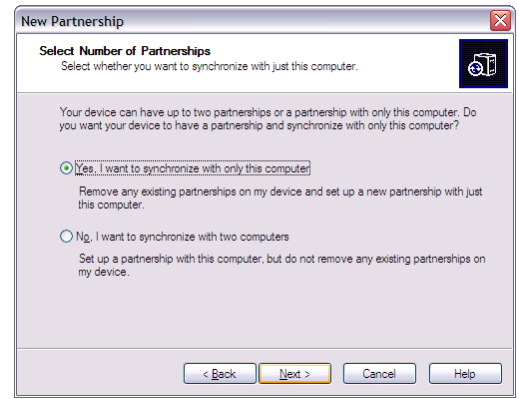
There are two types of partnerships that you can create with your Janam XG100CE. You can automatically synchronize the files on your handheld device with your PC when you start your device. Or, you can establish a guest partnership and manually copy the files you want to synchronize.

#### To set up a partnership to automatically sync files:

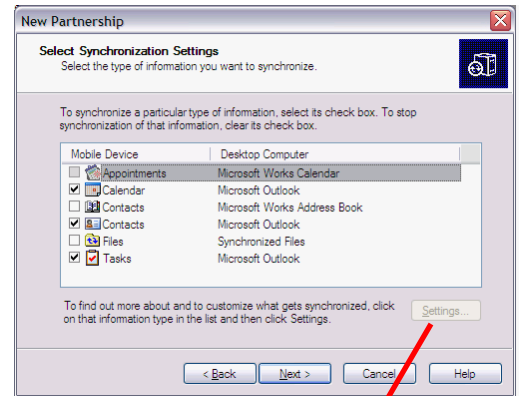
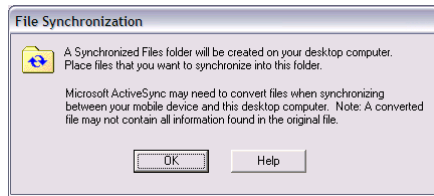
1. Connect your **Janam XG100CE** to your **PC**.
2. The ActiveSync **New Partnership** window appears.
3. Click **Yes** to set up a partnership, and click **Next**.



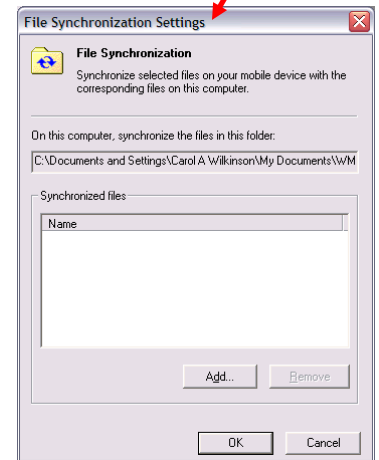
4. Select **Yes** in the *Select Number of Partnerships* screen.
5. Click **Next**.



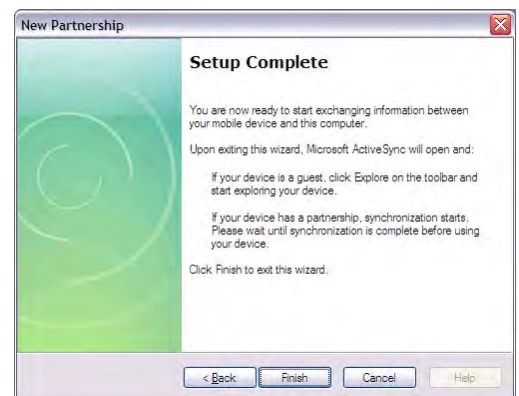
6. Select the **Files** you want to sync between your mobile device and your computer.
  - **NOTE:** when you select **Files**, an additional screen appears (shown below) with further information. Read carefully before proceeding, because your files may be converted.



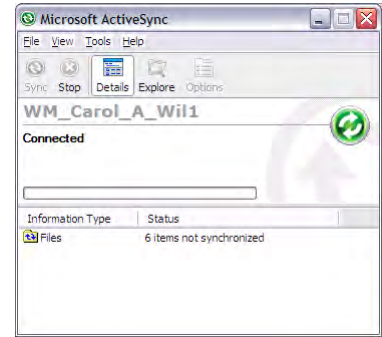
7. Click the **Settings** button in the *Select Synchronization Settings* screen (#6 above), and the screen at right will appear.
8. Add the Files you want to sync with the files on your mobile device.
9. Click **OK > Next** to continue the setup.



10. The partnership setup is complete. You may need to accept the partnership on your Janam XG100CE.

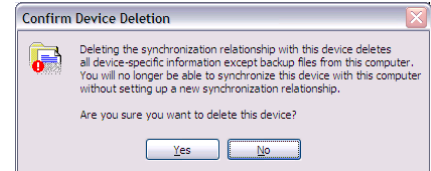


- The ActiveSync manager screen appears on your desktop. As the automatic synchronization progresses, the status bar will fill and the sync will be displayed in the status section.



**To delete a partnership:**

- Go to **File > Delete Partnership** in the ActiveSync manager.
- Click **Yes** when confirmation screen appears.
- You will need to **re-establish the partnership** when you connect your Janam XG100CE to your PC, or you will need to connect as a guest.

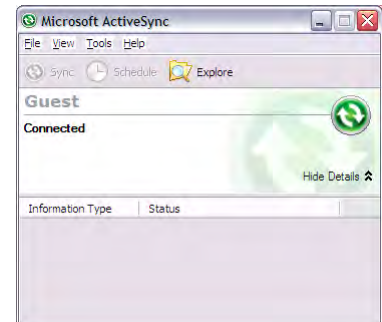


**To set up a guest partnership:**

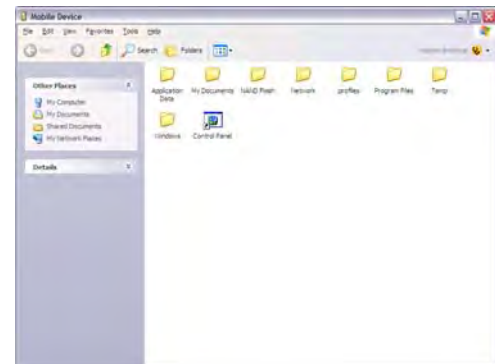
- Connect your **Janam XG100CE** to your PC.
- The ActiveSync **New Partnership** window appears.
- Click **No** checkbox, and click **Next** button.
- You will be connected to your mobile device, and the guest connection will appear, as shown.
- You may also need to accept the partnership on your Janam XG100CE.



- Select **Explore** to manually copy the files on your handheld to your desktop computer.



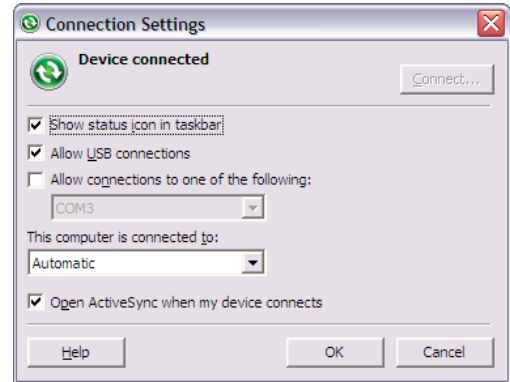
- Windows Explorer will appear with the folders and files on your mobile device.
- Select the file or file(s) you want to move or copy.
- Choose **copy files** and select a destination folder on your PC.



## Partnership Settings

### To change partnership connection settings:

1. Click the **ActiveSync** icon in your Windows system tray (bottom right corner of taskbar).
2. Choose **File > Connection Settings** from the ActiveSync manager menu.
3. Make changes and tap **OK**.





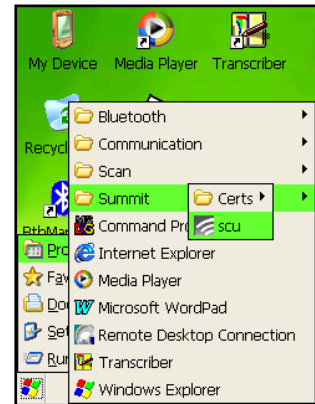
## 802.11 Wireless Configuration

The following section details the basic 802.11 wireless configuration for your Janam XG100CE.

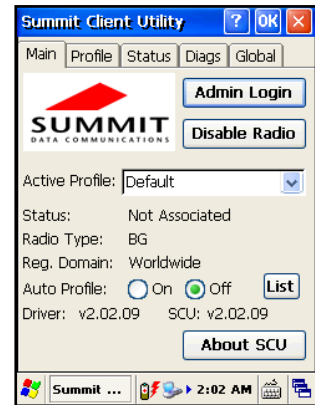
### Wireless Local Area Network Access

To set up network profile:

1. Click **Start > Programs > Summit > scu.**  
Or **Control Panel > Wi-Fi.**

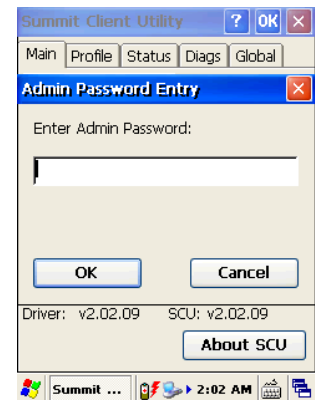


2. The **Active Profile** is set to "Default".

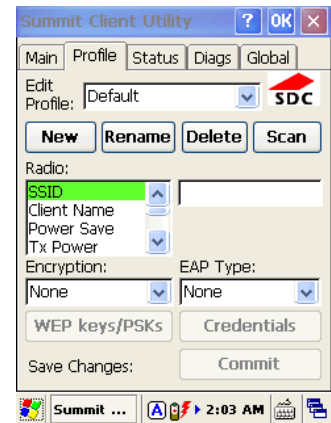


3. Tap **Admin Login** button and enter the password **SUMMIT**

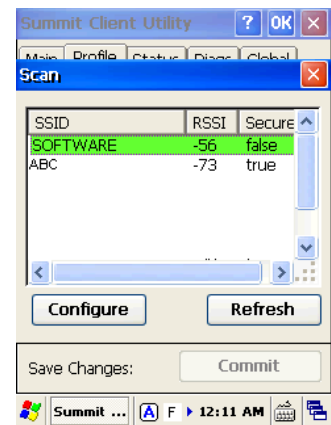
**Note:** Use all uppercase letters for the password.



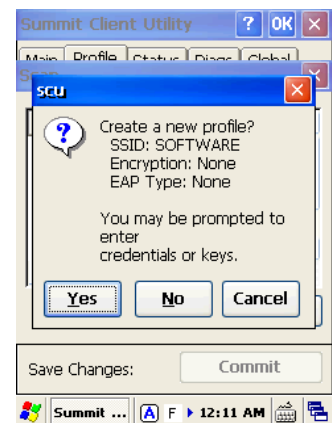
- Click the **Profile** tab and double-tap the **Scan** button to search for nearby access points.



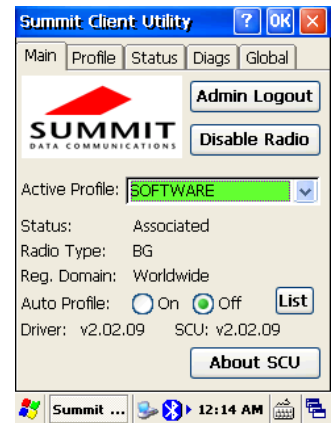
- Select the desired network and click **Configure** to set the network profile. Eg: **SOFTWARE**.



- Click **Yes** to complete the new profile configuration.

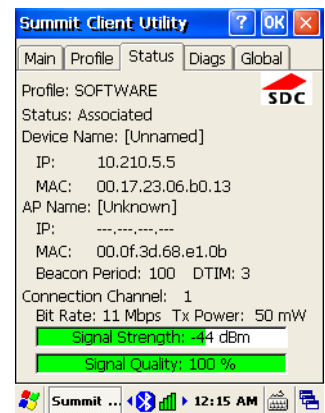


- On the **Main** tab, change the **Active Profile** to the new profile created in the last step. Eg: **SOFTWARE**



- Click the **Status** tab to check the connection status.

Note: For more detailed information regarding the Summit Client Utility, please refer to the *Summit User's Guide for Software Version 2.01*.



## Bluetooth Manager

The following chapter provides general instructions to set up Bluetooth on your Janam XG100CE. Complex or custom installations may require additional expertise from Janam's technical support team.

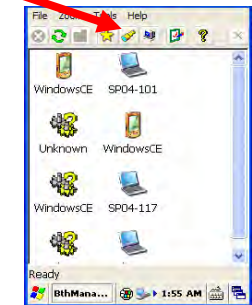
### Start Bluetooth Manager

Double-tap **Bluetooth Manager** Icon on the desktop.



### Scan Device

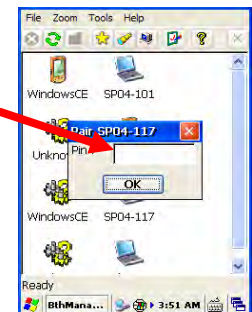
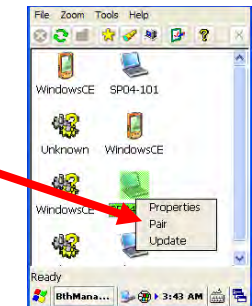
Tap **Show distant devices** icon.  
This will show Bluetooth-ready devices in the near distance.



### Device Pairing

To pair the XG100CE with another Bluetooth device:

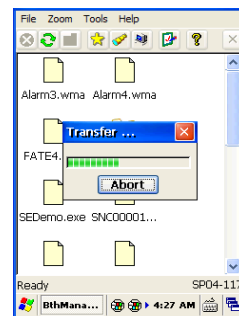
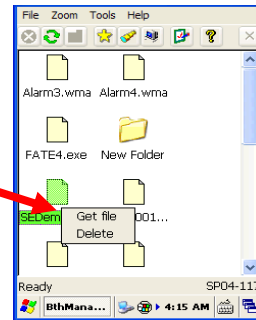
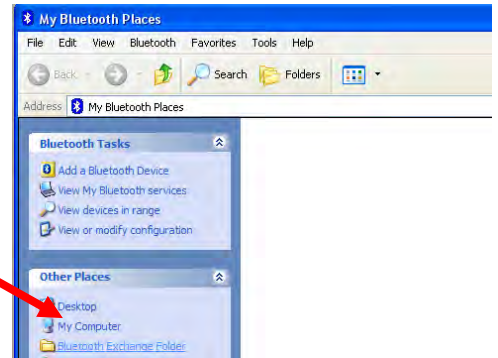
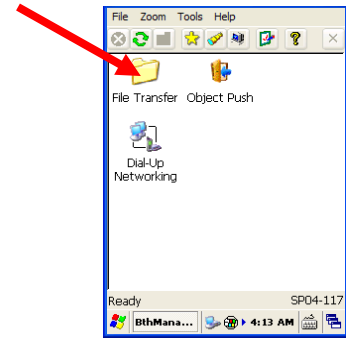
- Using the stylus, tap, hold and release the desired device and select **Pair**.
- Choose and enter a **PIN** for pairing and enter the same **PIN** on the pairing device.
- Tap **OK** to exit.
- A **lock** icon will display besides the paired device when it is successfully paired.



## File Transfer

### To transfer files:

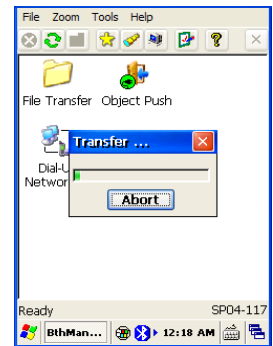
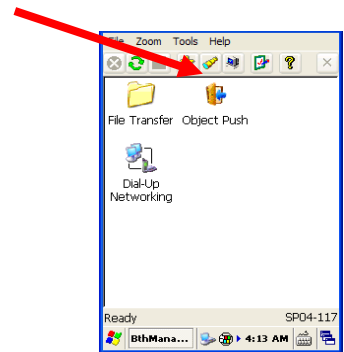
1. Pair the device. See **Device Pairing** (page 10-1).
2. Double-tap the paired device
3. Double-tap **File Transfer**. This will show files from the paired device which are located on your workstation's Bluetooth exchange folder.
4. Click the file that is to be transferred.
5. Select **Get file**.
6. Bluetooth File Transfer access authorization will prompt in the paired device.
7. Select **OK**.
8. Transfer progress will display on the screen device.
9. Check the transferred file in **My device > Temp folder**.



## Object Push

To push objects from the XG100CE to another Bluetooth device:

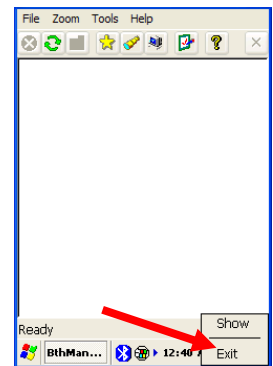
1. Pair the device. See **Device Pairing** (page 10-1).
2. Double-tap the paired device and double-tap **Object Push**.
3. This will show **My Device** and files that can be transferred from the XG100CE to the paired device.
4. Select any file to be transferred.
5. Tap **OK**.
6. Transfer progress will display on the screen device.
7. Check the transferred file in **My documents > Bluetooth Exchange Folder**.



## Exit Bluetooth Application

To exit Bluetooth Application:

1. Click the **Bluetooth** icon on the taskbar and select **Exit**.

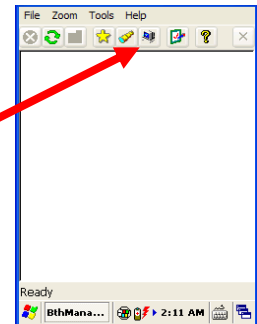


## Serial Bluetooth

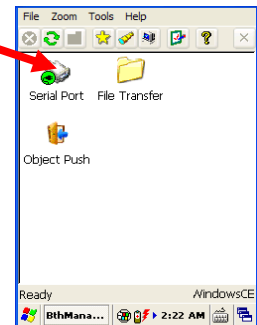
Note: Please refer to the specific instructions provided with the device you wish to communicate with for proper setup via serial Bluetooth profiles.

### To connect Bluetooth by means of serial.

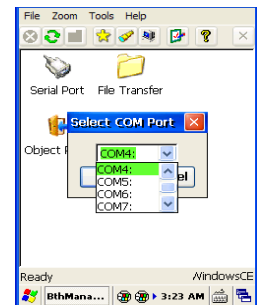
1. Double tap the Bluetooth on the desktop.
2. Tap the **show local services**.



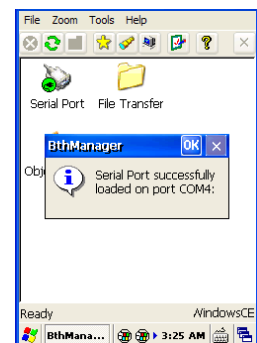
3. Double-tap the **Serial Port** Icon.



4. Select the appropriate COM port required to communicate with the paired device (ex. COM4).
5. Tap **OK**.



6. A message will display on the screen:  
"Serial Port successfully loaded on port COMx:"
7. Select **OK**.

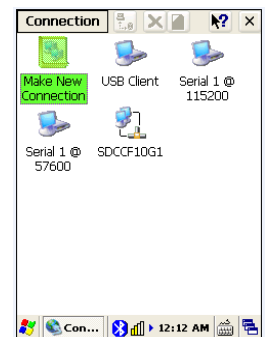
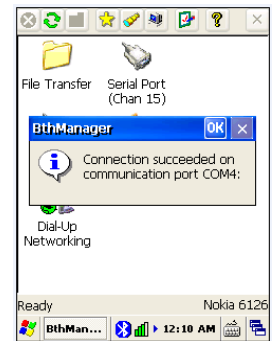
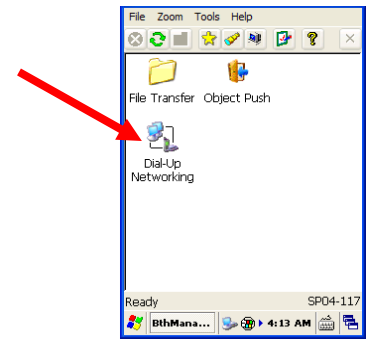


## Dial Up Networking

### To use DUN (usually used to tether to a cellular handset):

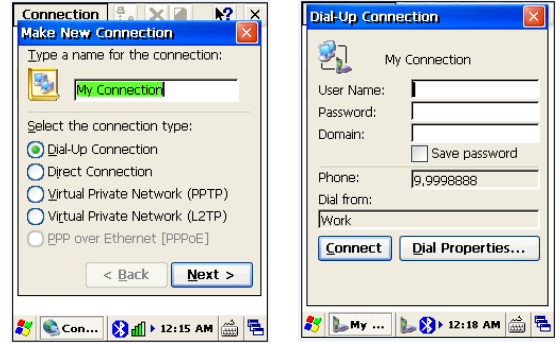
- Not all handsets support tethering. Consult your service carrier
- To determine if your handset is supported under DUN.

1. Pair the device. See **Device Pairing** (page 10-1).
2. Double-tap the paired device
3. Double-tap **Dial-Up Networking**.
4. Tap **OK** when connection success is displayed.
5. Navigate to "Start", "Settings", "Network and Dial-Up Connections"
6. Make a new connection

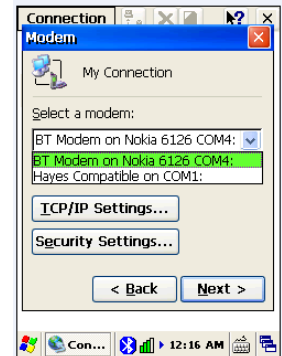




7. Use Dial-Up Connection and assign a name for your connection. Tap “next”



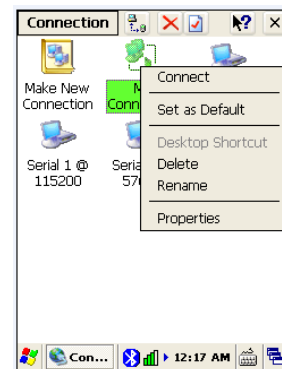
8. From the drop down select your paired Bluetooth device.



9. Enter phone dialing information

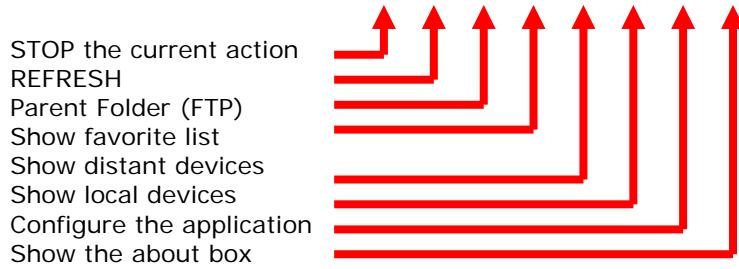


10. Tap and hold your connection and slide your stylus to “Connect”




11. Enter optional login information from your carrier ISP and “Connect”. The Bluetooth device in this case the Nokia 6123 wakes up and dials the phone number for the ISP.

## Bluetooth Toolbar



## Regulatory and Maintenance

### Regulatory and Safety Approvals

 The CE mark on the product indicates that the system has been tested to and conforms with the provisions noted within the 2004/108/EC Electromagnetic Compatibility Directive.

For further information, please contact: Janam Technologies; 100 Crossways Park West, Suite 105, Woodbury, NY 11797.

Janam Technologies shall not be liable for use of our product with equipment (i.e., power supplies, personal computers, etc.) that is not CE marked and does not comply with the Low Voltage Directive.

### FCC and Canadian Compliance

XG Series mobile computers meet or exceed all applicable standards and have been manufactured to the highest level of quality. To see the specific labels associated with RF terminals configurations, visit [www.janam.com](http://www.janam.com). **Warning:** Changes or modifications to this unit not expressly approved by the party responsible for compliance could void the user authority to operate the equipment.

### XG Series RF Terminals with 802.11b/g and Bluetooth

RF, regulatory and safety approvals

| Parameter          | Specification                         |
|--------------------|---------------------------------------|
| RF approvals       |                                       |
| U.S.A.             | FCC Part 15 Subpart C                 |
| Canada             | RSS-210 issue 7:2007 annex 8          |
| European Community | EN 300 328 v1.7.1:2006                |
| Australia          | AS/NZS<br>4268:2003+A1 :2005+A2 :2006 |

This device complies with Part 15 of the FCC Rules. Operation is subject to the following two conditions: (1) this device may not cause harmful interference; and (2) this device must accept any interference received, including interference that may cause undesired operation.

This equipment has been tested and found to comply with the limits for a Class B digital device, pursuant to Part 15 of the FCC Rules. These limits are designed to provide reasonable protection against harmful interference in a residential installation. This equipment generates, uses and can radiate radio frequency energy and, if not installed and used in accordance with the instructions, may cause harmful interference to radio communications.

However, there is no guarantee that interference will not occur in a particular installation. If this equipment does cause harmful interference to radio or television reception, which can be determined by turning the equipment off and on, the user is encouraged to try to correct the interference by one or more of the following measures:

- Reorient or relocate the receiving antenna.
- Increase the separation between the equipment and receiver.
- Connect the equipment to an outlet on a different circuit than the one the receiver is connected to.

If necessary, the user should consult the dealer or an experienced radio/television technician for additional suggestions. The user may find the following booklet helpful: "Something about Interference." This is available at local FCC regional offices. Janam is not responsible for any radio or television interference caused by unauthorized modifications of this equipment or the substitution or attachment of connective cables and equipment other than those specified by our company. The correction is the responsibility of the user. Use only shielded data cables with this system.



This device and its antenna must not be co-located or operating in conjunction with any other antenna or transmitter. To maintain compliance with the FCC RF exposure guidelines for body-worn operation, do not use accessories that contain metallic components other than what is specified by the manufacturer.

**This Class B digital apparatus complies with the Canadian ICES-003.**

Cet appareil numérique de la Class B est conforme a la norm NMB-003 du Canada.

Operation is subject to the following two conditions: (1) this device may not cause interference, and (2) this device must accept any interference, including interference that may cause undesired operation of the device.

L'utilisation de ce dispositif est autorisée seulement aux deux conditions suivantes : (1) il ne doit pas produire de brouillage, et (2) l'utilisateur du dispositif doit être prêt à accepter tout brouillage radioélectrique reçu, même si ce brouillage est susceptible de compromettre le fonctionnement du dispositif.

To prevent radio interference to the licensed service, this device is intended to be operated indoors and away from windows to provide maximum shielding. Equipment (or its transmit antenna) that is installed outdoors is subject to licensing.

**RF, Regulatory and Safety Approvals**

| Parameter | Specification             |
|-----------|---------------------------|
| R&TTE     | EN 300 328 v1.7.1:2006    |
|           | EN 301 489-1 v1.8.1:2005  |
|           | EN 301 489-17 v1.2.1:2002 |
|           | EN 60950-1:2006           |
|           | EN 50392:2004             |
| Australia | AS/NZS CISPR 22:2006      |

This product is marked with **CE** in accordance with the Class II product requirements specified in the R&TTE Directive, 1999/5/EC. The equipment is intended for use throughout the European Community. Its authorization for use in France is restricted as follows.

PAN European Frequency Range: 2.402-2.480 GHz

Restrictions in France:

- Indoor use: Maximum power (EIRP\*) of 100 mW for the 2400-2483.5 MHz band.
- Outdoor use: Maximum power (EIRP\*) of 100 mW for the 2400-2454 MHz band and maximum power (EIRP\*) of 10 mW for the 2454-2483.5 MHz band.

## Other Electrically Powered Devices

The radio in the XG Series terminal operates on the same frequency band as a microwave oven. Therefore, if you use a microwave within range of the XG100CE you may notice performance degradation in your wireless network. However, both your microwave and your wireless network will continue to function.

## Care and Cleaning of Terminals

When needed, clean the image engine window and the LCD display with a clean, non-abrasive, lint-free cloth. The terminal can be cleaned with a damp cloth.

## For European Community users

Janam Technologies complies with Directive 2002/96/EC of THE EUROPEAN PARLIAMENT AND OF THE COUNCIL OF 27 January 2003 on waste electrical and electronic equipment (WEEE).

## Waste electrical and electronic equipment (WEEE) information

This product has required the extraction and use of natural resources for its production. It may contain hazardous substances that could impact health and the environment if not properly disposed. In order to avoid the dissemination of those substances into our environment and to diminish the pressure on natural resources, we encourage you to use the appropriate take-back systems for product disposal. Those systems will reuse or recycle most of the materials of the product you are disposing in a sound way.



The crossed out wheeled bin symbol informs you that the product should not be disposed of along with municipal waste and invites you to use the appropriate separate take-back systems for product disposal.

If you need more information on the collection, reuse and recycling of these systems, please contact your local region's waste administration. You may also contact your supplier for more information on the environmental performances of this product.

## Battery Warning

CAUTION  
RISK OF EXPLOSION IF BATTERY IS REPLACED  
BY AN INCORRECT TYPE.  
DISPOSE OF USED BATTERIES ACCORDING  
TO THE INSTRUCTIONS

Use only Janam approved batteries such as the BAT-G1-001 and recharge batteries using only Janam approved chargers. Use only easily accessible wall outlets that are easily reached with the length of the supplied power cables.

The standard charger provides an easy and convenient way to charge the device. You can purchase the charger through an authorized dealer. Visit Janam's website [www.janam.com](http://www.janam.com) for information.

The power outlet shall be near the equipment and shall be easily accessible.

### GENERAL INFORMATION

1. Before using the standard charger, read all instructions and warnings.
2. Please retain this instruction for future reference.

### WARNING

1. No user serviceable parts inside. Do not open the charger. The charger is not user serviceable.
2. If found any damage or cracking on the enclosure of the charger, do not use the charger. This charger shall be disposed of.
3. Do not short-circuit the output terminals of the charger.
4. The charger is for indoor use only. Do not expose the charger to moisture or place the charger at location which could subject to water spillage.
5. The standard charger is designed for use with this mobile computer only. Do not use this charger for other purposes.

### OPERATING INSTRUCTION

1. Insert the output plug of the standard charger to the mobile computer before plug in the charger into ac power outlet.
2. Always unplug the standard charger from the outlet after use.
3. Ensure that your local power supply system complies with the technical data of the standard charger.