

Janam XM Series - Windows Mobile Remote Display Control

With the Remote Display Control application, you can show the Janam XM60 interface on the display of a desktop or laptop computer. This is a great tool for demonstrating the power of the XM60 to a larger audience, providing on-screen programming assistance or giving presentations. It also allows developers to test their applications for their XM handhelds using a larger screen.

1

Download Developer Power Toys

» **Download** the Microsoft application.

Developer Power Toys for the Windows Mobile platform is available at: <http://www.microsoft.com/downloads/details.aspx?familyid=74473FD6-1DCC-47AA-AB28-6A2B006EDFE9&displaylang=en#filelist>.

Version: 12Dec2006
 Date Published: 9/18/2003
 Download Size: 1.2 MB - 19.7 MB*

*Download size depends on selected download components.

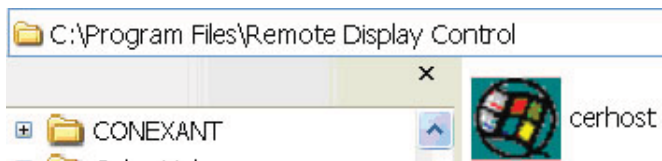


2

Connect Your Workstation to the XM60

Remote Display Control uses TCP/IP and is compatible with ActiveSync® connections via Ethernet or dial-up.

» **Establish** an ActiveSync connection between your workstation host and the Janam XM60 by simply double-clicking on the "cerhost" file in your Windows XP file browser.



» **Click** on the "cerdisp2" icon on your Janam XM60.

Setup is complete. Using your linked XP workstation or laptop, you can now remotely display and control the XM60 handheld.

