



*Technology at Work* ®.

# Contents

<b>1 INTRODUCTION</b>	<b>1-1</b>
ABOUT THE JANAM XM70	1-1
FEATURE SUMMARY	1-1
HARDWARE OVERVIEW	1-2
<b>2 GETTING STARTED</b>	<b>2-1</b>
UNPACKING YOUR JANAM XM70	2-1
RECOMMENDED HOST COMPUTER CONFIGURATION/REQUIREMENTS	2-1
ATTACHING THE HANDSTRAP	2-2
INSTALLING/CHARGING THE BATTERY	2-2
TURNING ON THE XM70	2-3
UNDERSTANDING THE TODAY SCREEN	2-4
<b>3 SETTING UP YOUR JANAM XM70</b>	<b>3-1</b>
KEYBOARD CONTROLLED SCREEN NAVIGATION	3-1
LCD SCREEN OPTIONS AND CALIBRATION	3-1
SETTING BASIC USER PREFERENCES	3-3
SETTING BACKGROUND	3-3
PASSWORD PROTECTION	3-4
SCREEN/KEYBOARD LOCK	3-6
REGIONAL SETTINGS	3-6
OWNER INFORMATION	3-8
SCREEN ORIENTATION	3-9
DEVICE NAME	3-10
VOLUME AND ALERT ADJUSTMENTS	3-11
BATTERY POWER	3-12
SCREEN OFF FUNCTION	3-13
BACKLIGHT/BRIGHTNESS	3-14
XM70 PANEL	3-15
OPEN/REMOVE APPLICATIONS	3-16
<b>4 RESETTING THE XM70</b>	<b>4-1</b>
SOFT RESET	4-1
HARD RESET	4-3
<b>5 BARCODE SCANNING</b>	<b>5-1</b>
DEMONSTRATION AND SETUP	5-1
ENABLING THE SCANWEDGE FEATURE	5-2
<b>6 ENTERING DATA</b>	<b>6-1</b>
ENTERING INFORMATION ON THE XM70	6-1
USING THE BARCODE SCANNER	6-1
USING THE INPUT PANEL (ONSCREEN KEYBOARD)	6-1

---

KEYBOARD SHORTCUTS	6-2
USING THE ONSCREEN KEYBOARD	6-2
IMPORTING DATA	6-3
<b>7 EXCHANGING AND UPDATING DATA</b>	<b>7-1</b>
CREATING A USER PROFILE	7-1
MANAGING PARTNERSHIPS	7-2
PARTNERSHIP SETTINGS	7-10
<b>8 WLAN 802.11 WIRELESS CONFIGURATION</b>	<b>8-1</b>
WIRELESS LOCAL AREA NETWORK ACCESS	8-1
<b>9 USING BLUETOOTH</b>	<b>9-1</b>
OVERVIEW	9-1
BLUETOOTH CONFIGURATION	9-1
<b>10 REGULATION AND MAINTENANCE</b>	<b>10-1</b>
REGULATORY INFORMATION	10-1
FCC AND CANADIAN COMPLIANCE	10-1
CARE AND CLEANING OF TERMINALS	10-2
WASTE ELECTRICAL AND ELECTRONIC EQUIPMENT (WEEE) INFORMATION	10-2
BATTERY WARNING	10-2
GENERAL INFORMATION	10-3
OPERATING INSTRUCTIONS	10-3

## Introduction

### ***About the Janam XM70***

Designed to deliver maximum return on investment, the new XM70 provides support for Android™ and Microsoft Windows Embedded® Handheld 6.5 operating systems on the same device, allowing customers to future-proof their technology investment and eliminate the costs associated with forced application migration and expensive hardware upgrade. Backward compatibility with XM66 accessories allows Janam's global customer base to reuse existing technology while cost-effectively upgrading to the latest mobile computing platform.

Janam's XM70 rugged mobile computer offers advanced 1D and 2D barcode scanning with Zebra's SE4500 scan engine. With extraordinary scanning speed and outstanding motion tolerance, the XM70 improves productivity across industries including retail, hospitality, healthcare, transportation and logistics and ticketing.

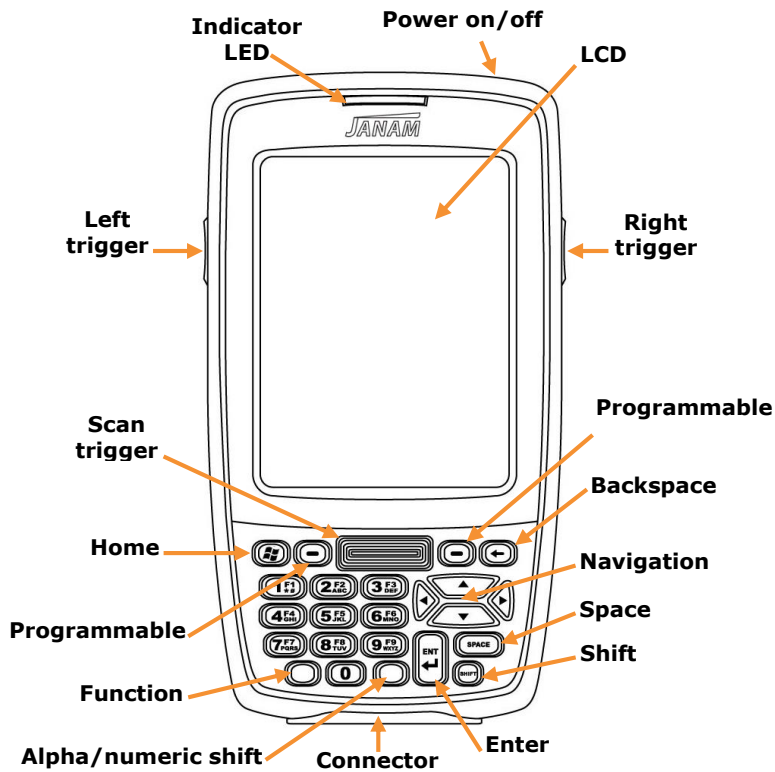
Weighing less than 10 ounces and equipped with a full 3.5-inch display, the XM70 fits in the palm of the hand and can survive all-day use in challenging environments. The XM70 can withstand 4 foot/1.2 meter drops to concrete on all sides across a wide temperature range and is sealed against rain and dirt to IP54 standards. Choice of 2400mAh or 4000mAh Li-ion battery ensures uninterrupted operation throughout the workday.

### ***Feature Summary***

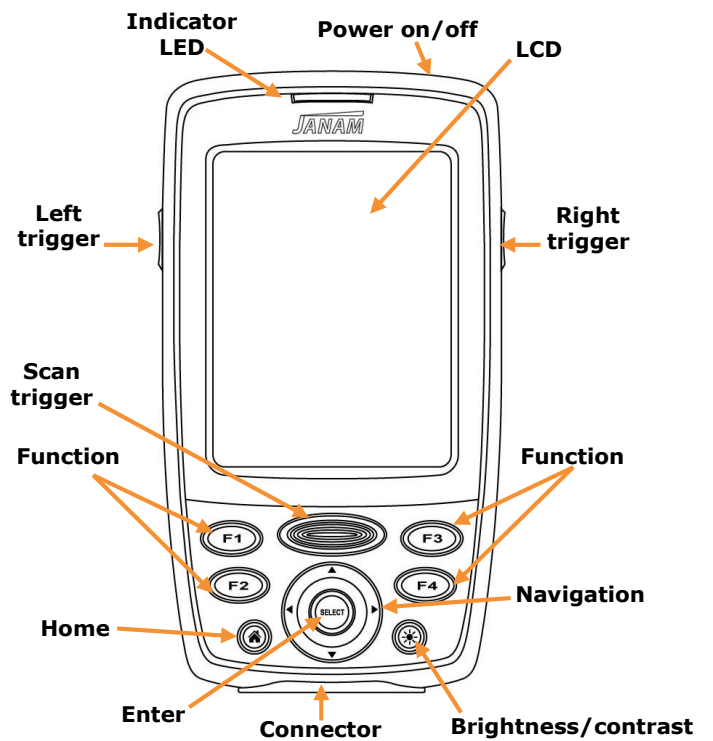
- Small, light and truly pocketable – under 10 ounces
- Same hardware runs Android and Microsoft Windows Embedded Handheld 6.5
- Brilliant 3.5-inch color display optimized for both indoor and outdoor use
- High-performance 1D and 2D barcode scanning
- Multiple 4'/1.2m drops to concrete across operating temperature range
- Sealed to IP54 standards against dust and water
- 1GB/4GB of built-in memory with expansion capability
- User-accessible microSD card slot
- Summit IEEE 802.11a/b/g/n Wi-Fi
- Bluetooth 4.0 connectivity
- Numeric or PDA keypad
- Full system of accessories

# Hardware overview

## Front view numeric keypad



## Front view PDA keypad



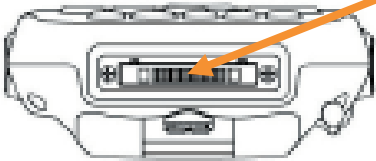
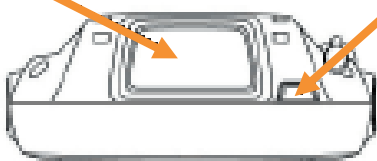
Top view

Bottom view

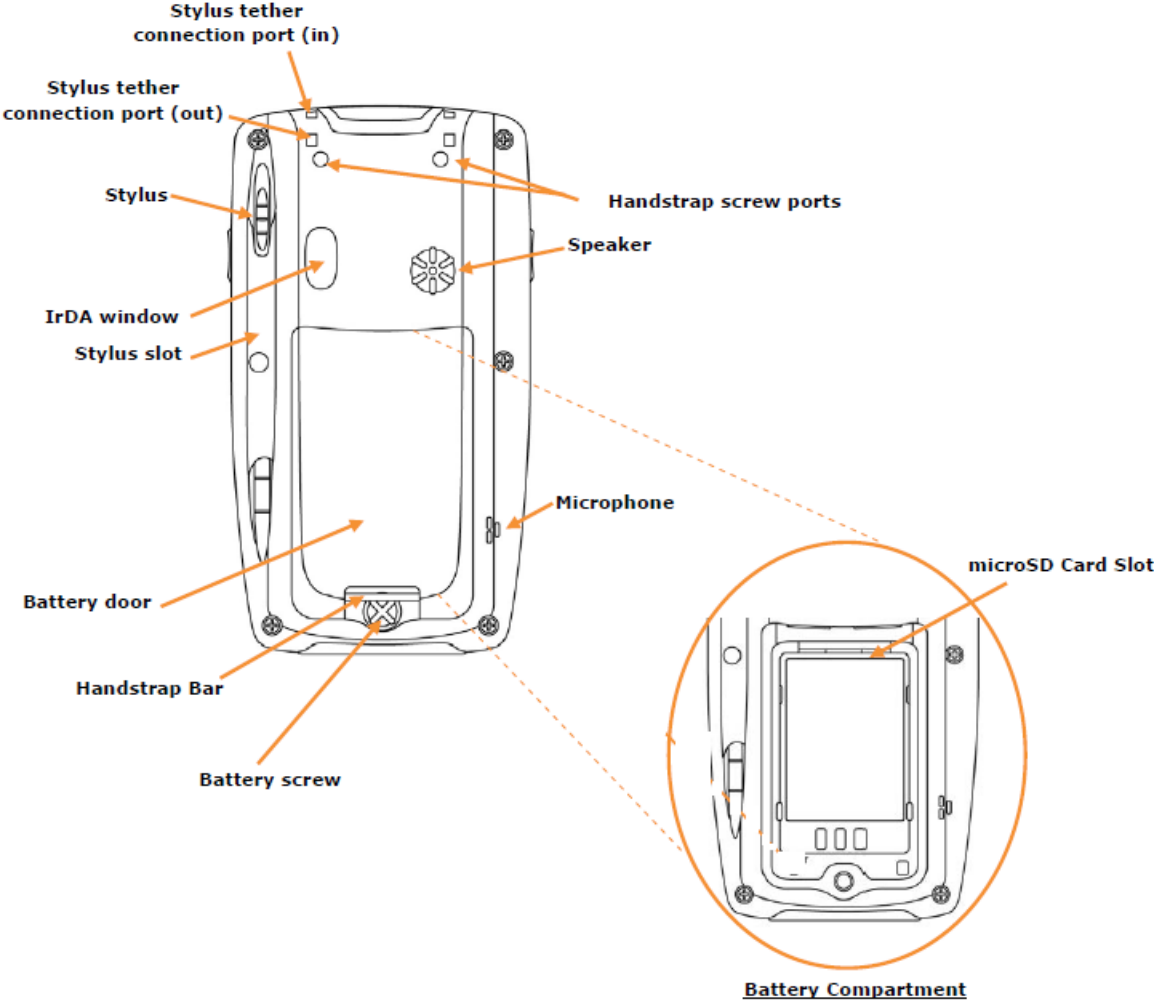
Barcode scan window

Power on/off

Syncing/charging connector



Back view



## Getting Started

### ***Unpacking your Janam XM70***

Make sure you have the following

- Janam XM70 handheld computer
- Janam authorized battery
- Handstrap and two screws to attach strap to device
- Charging accessory (ordered/packaged separately) with one of the following kits:
  - Single-slot cradle kit
  - Four-slog cradle kit
  - USB cable with AC adapter
  - Serial cable with AC adapter

### ***Recommended host computer configuration/requirements***

The Janam XM70 Development Kit assists programmers with the development of applications for Janam XM70 rugged barcode scanners running the Microsoft® Windows Embedded Handheld 6.5 operating system. It contains all necessary details and instructions for developing applications that use Janam XM70 libraries, including scanning, imaging and hardware utilities.

The development kit is designed for use with Microsoft® eMbedded Visual C++ 4.0 (*SP4 or above*) or Microsoft Visual Studio 2005/2008.

- IBM-compatible host computer with Pentium 450 MHz processor or higher
- Microsoft Windows XP Service Pack 2, Microsoft Windows 2000 Service Pack 4, Windows Server 2003 Service Pack 1 or Windows Vista, Windows 7, Windows 8.
- 192 MB RAM (Recommended: 256 MB)
- Hard disk space:
  - Without Microsoft Developer Network (MSDN): 1 GB on system drive and 2 GB on installation drive
  - With MSDN: 1 GB on system drive; 3.8 GB on installation drive with a full installation of MSDN; and 2 GB on installation drive with a default installation of MSDN
- CD-ROM or DVD-ROM drive
- One available serial port
- Video minimum 800 x 600, 256 colors (Recommended: 1024 x 768, high color 16-bit)
- Mouse or compatible pointing device

### **Update your desktop software**

Microsoft ActiveSync/WMDC software is available at the Microsoft web site at <http://www.microsoft.com>.

## ***Attaching the Handstrap***

To attach the handstrap:

1. Align the two holes in the metal handstrap anchor at the two handstrap screw ports.
2. For each side, place one of the screws provided into a lined up screw hole/screw port and turn clockwise. Secure both sides before fully tightening down the screws.
3. Separate velcro to extend the handstrap and feed loose end through the handstrap bar. Fasten velcro together to close the strap. Fit strap and secure device to user's hand by adjusting velcro as needed.

## ***Installing/Charging the Battery***

### **IMPORTANT Battery Warning!**

**CAUTION:** Use only Janam-approved batteries.

There is the risk of explosion if battery is replaced by an incorrect type.

Always dispose of used batteries according to the instructions.

1. To access the battery compartment, turn the **locking-screw counterclockwise** to open the latch and remove **battery cover**.
2. Position the **battery lift strap** against the back of battery well, ensuring tab extension is on left side.
3. Place a **Janam Lithium-ion rechargeable battery** in and snap into place.
4. Replace the **battery cover** by positioning the top prongs first and sliding into place. Tighten **locking screw** by turning clockwise.

### **To charge the battery using the USB Cable or Serial Cable:**

1. Connect the **power supply** to the USB cable or serial cable.
2. Connect snap-on end of USB cable or serial cable to bottom of XM70, making sure the word TOP on the cable connector faces front.
3. Insert country-specific AC plug, and plug in the power supply.
4. The LED will illuminate to confirm connection (orange indicates charging, green indicates fully charged and red indicates fault).
5. The battery is fully charged in approximately three hours.

### **To charge the battery using the Single-Slot or Four-Slot Cradle:**

1. Connect the **power supply** to the cradle.
2. Connect the **line cord** to the appropriate power supply.
3. Plug in the **power supply**.
4. Insert the **XM70** into the cradle.  
**Note:** Proper insertion is required to ensure connection.
5. The LED will illuminate to confirm connection (orange indicates charging, green indicates fully charged and red indicates fault).
6. The battery is fully charged in approximately three hours.



## Remove the battery from spare battery charging well

Do not force-pull the spare battery from charging well. Follow these instructions to remove the spare battery:

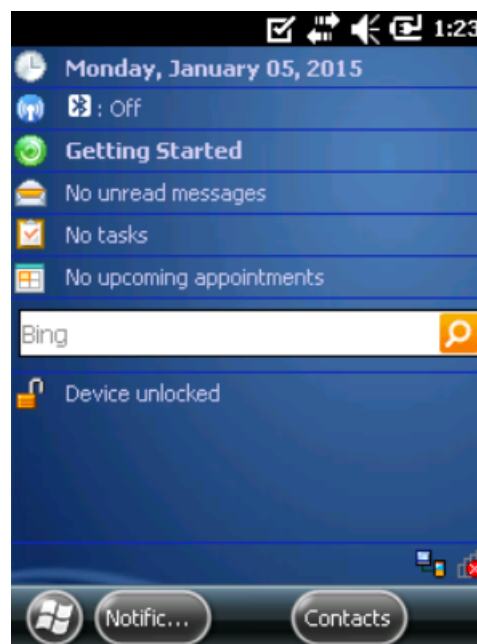
1. While gently holding down with thumb, slip **index finger** down against the battery so that you feel the edge where the battery meets the cradle.
2. Press **down and forward** with index finger to lift battery edge.

## Turning on the XM70

After installing the battery in the XM70, press the power button at the top of the device.

The first time the device is turned on, calibrate the screen using the stylus. The stylus is located on the back of the device. To calibrate, simply follow the onscreen instructions and remember to save your settings.

**Note:** If your XM70 came pre-loaded with a custom software application, the home screen shown below may not appear. Follow the onscreen instructions.



# Understanding the Today Screen



## Setting Up Your Janam XM70

### ❑ **IMPORTANT NOTE!**

Always use the stylus for tapping or making strokes on the handheld computer screen. **DO NOT** use a pen, pencil or any other object on the touch screen display.

### **Keyboard-Controlled Screen Navigation**

The keyboard offers additional navigational controls, including the Screen Scroll Up/Left and Screen Scroll Down/Right buttons.

To scroll up or down, press the **Up** or **Down** arrow button.

To scroll left or right, press the left or right buttons.



### **LCD Screen Options and Calibration**

The XM70 provides a utility that enables users to customize LCD screen orientation and to recalibrate the screen's tapping function accuracy.

**Accessing the Screen Menu:**

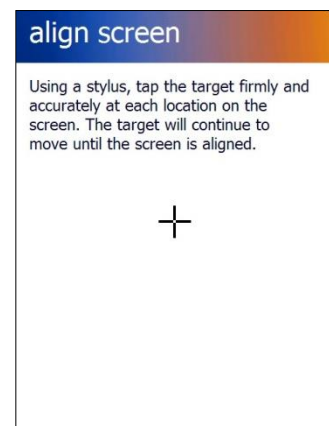
1. From the **Windows Mobile Start Desktop**, tap **Settings**.
2. From the **Settings** screen, tap **System**.
3. From the **System** Screen, scroll down and tap **Screen**.



4. From the **Align Screen**, select the preferred display orientation: **Portrait** (the default setting), **Landscape (right-handed)** or **Landscape (left-handed)**.



5. If you notice a decrease in accuracy or responsiveness when using the stylus, repeat steps 1 through 3 and tap **Align Screen**. Follow the on-screen instructions. Continue to tap each changing crosshair position with the stylus until the screen exits the align screen function and returns automatically to the **Screen Orientation** screen.



## Setting Basic User Preferences

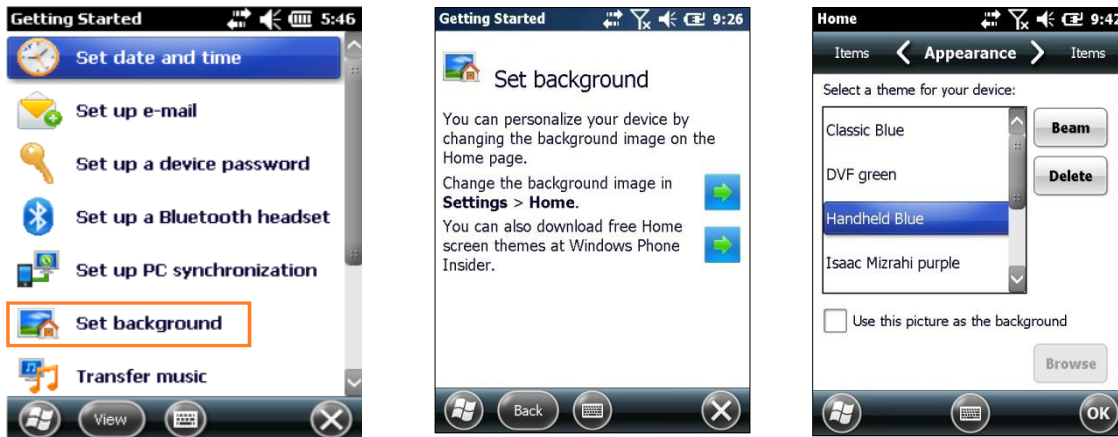
Janam XM70 devices can be customized in many ways to suit task requirements, security and/or individual user preferences. The following is an overview of a selection of key XM70 device settings with instructions on how to make changes. The general navigations and actions used to affect these changes are instructive to other similarly controlled settings.

To access the settings, tap getting started to open the getting started menu:



## Setting a Background

1. Tap **Set background** on the **Getting Started** menu screen.
2. Tap the arrow to the right of *Change the background in **Settings** > **Home**.*
3. Select a graphic theme or picture as the screen background and tap **OK**.





**Note:** *Picture backgrounds can affect the readability of text within some applications.*



**Tip:** *Tapping the Getting Started icon on the Windows Mobile Start screen is an equally effective means of navigating to the Getting Started menu.*



## Password Protection

### Setting up a device password:

1. Tap **Set up a device password** on the **Getting Started** menu screen.
2. Tap the arrow to the right of **Set up a password in Settings > Lock**.
3. Check the **Prompt if phone (device) unused for** box and select a delay from 0 minutes to 24 hours. Checking this box enables the password setup process to continue.



- Note:**
- *Leaving the "Prompt if phone (i.e. device) unused for" box unchecked leaves the device without password protection.*
  - *It is recommended that the "Prompt if device unused" time strike a practical balance between security and convenience.*
  - *Selecting a delay of 0 minutes will result in a condition requiring password input every time the device is used.*



4. Tap the down arrow in the Password type box.

5. From the pull-down menu, select the type of password you would like to use – Simple PIN (Personal Identification Number) or Strong alphanumeric. Enter the password and enter in the same password again for confirmation.

**Simple PIN** passwords contain only numeric characters and must be at least 4 characters in length. Overly simplistic sequences such as “1234”, “1111”, etc. will be rejected as unsafe.

**Strong alphanumeric** passwords must include at least 7 characters, 3 of which must be a combination of UPPERCASE and lowercase letters, numerals or punctuation.

**Examples: Upc4003    UPC?4003**

**To remove password protection:**

1. Tap **Start** menu > **Settings** > **Personal** tab > **Lock**.
2. Enter your current password.
3. Un-check the **Prompt if device unused for** check box.
4. Tap **OK**.

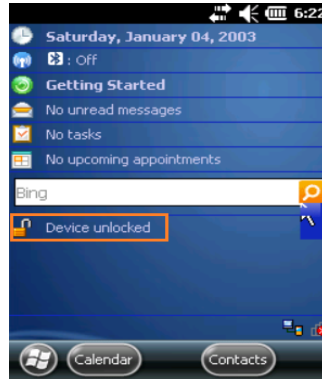
**Changing Passwords**

Passwords may be changed by following the same procedure used to set the initial password. However, the process will be interrupted with the password entry screen. Entering the current password will enable continuation of the password change process.

## Screen/Keyboard Lock



**Note:** *When the device is locked, neither the on-screen keyboard nor the physical keypad will accept user input, preventing unintentional input. This level of locking does not take the place of the added security of password protection.*



**To lock the device:** Tap the **Lock** (icon) on the "Start" screen

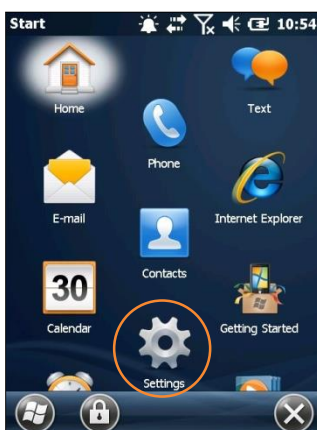
**To unlock the device:** Tap **Unlock**.

## Regional Settings

The style in which numbers, currency, dates and times are displayed is controlled by **Regional Settings**. XM70 devices are shipped with regional, language and input settings pre-set to English (United States).

**To change Regional settings:**

1. From the Windows Mobile desktop Start screen; Tap **Settings** (icon) > **System** > (folder) > **Regional Settings** (icon).





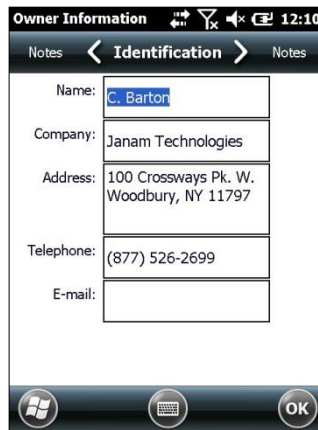
2. Select the desired setting from the **Regional Settings** pull-down menu.



## Owner Information

### Entering owner information:

1. From the Windows Mobile **Start** menu, tap **Settings** > **Personal** folder > **Owner Information**.
2. Select the **Identification** tab and enter **Owner Information**.
3. Select the **Notes** tab to enter additional owner information-related text such as "**Reward if Found.**"



### To display owner information:

From the Windows Mobile **Start** menu, tap **Settings** > **Personal** > **folder** > **Owner Information**.

## Screen Orientation

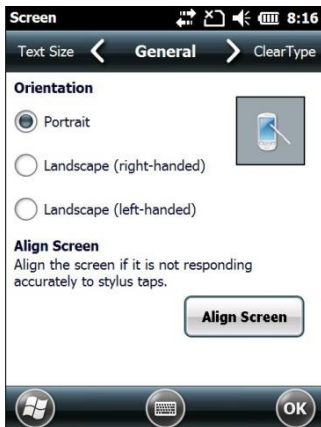
The default Screen Orientation is Portrait. If preferable, orientation can be changed to Landscape (right-handed or left-handed).

### Changing screen orientation:

1. From the Windows Mobile Start Screen, Tap **Settings** (icon) > **System** (folder) > **Screen** (icon).



2. **Select** the preferred screen orientation and tap **OK**.



Landscape Screen Example

- To auto rotate the screen orientation using the XM70 Accelerometer sensor go to **Start > Settings > System > Sensor (Icon) > Accelerometer (tab)**. Select the check box for **Auto Display Orientation**.

## Device Name

The XM70 Device name (which may already be assigned) is used to identify the device in the following situations:

- Synchronizing with a PC
- Connecting to a network
- Restoring information from a backup

### Assigning or changing the device name and/or description:

- From the Start menu tap **Settings (icon) > System (folder) > About (icon)**.



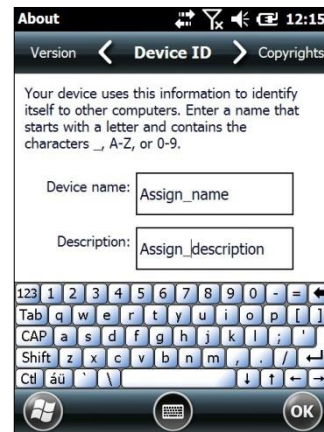
- Tap the **Device ID** tab.

- Enter a **Device name**. The Device name cannot exceed 15 characters. It must begin with a letter, consist of letters from A to Z, numbers from 0 to 9 and cannot contain spaces. Use the underscore character to separate words.



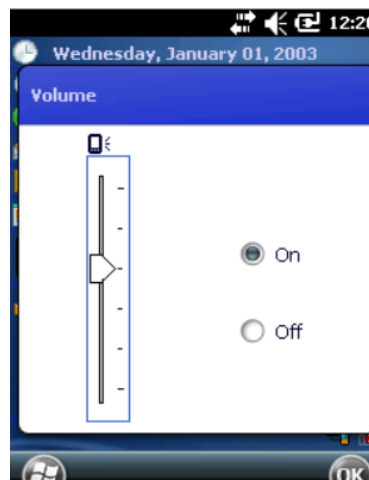
4. Enter a **Description**. The Description cannot exceed 50 characters. It must begin with a letter, consist of letters from A to Z, numbers from 0 to 9 and cannot contain spaces. Use the underscore character to separate words.

- **IMPORTANT NOTE!**  
*To synchronize multiple XM70 devices with the same PC, each device must have a unique name.*



## Volume and Alert Adjustments

To adjust the volume, tap the speaker icon.



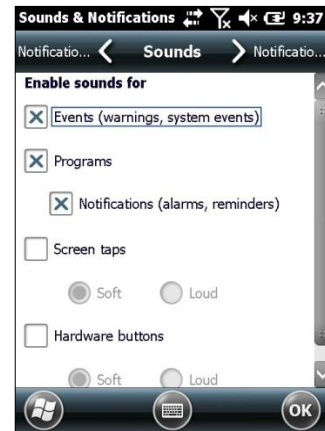
## Additional Sounds and Notifications

Additional sound-related settings are available, making it possible to adjust select device functions to suit the user's preference.

1. Tap **Settings > Sounds & Notifications**.



2. From the resulting **Sounds & Notifications <Sounds>** screen, choose device functions by tapping the corresponding checkbox(s).
3. For Screen taps and Hardware buttons, tap the preferred setting (Soft or Loud.)
4. Select the **Notifications** tab to assign notifications to specific events such as Incoming calls and ActiveSync activity.
5. From each **Events** options screen, select the preferred settings.
6. Tap **OK**.



## Battery Power

### Main and backup battery status

1. Tap **Settings** (icon) from the Windows Mobile **Start** desktop.
2. Tap **Power** (icon). Main Battery status is displayed in a bar chart from 0% to 100%.



### Conserving Battery Power

XM70 devices feature multiple power conservation options, some of which employ timers that can be set to strike a balance between user preference and optimal battery life. **On battery power** timers control the selected action only when the device is being operated on battery power. **On external power** timers control the selected action only when the device is being used with an external power supply.

- ✓ **Tip:** Whenever practical, you can conserve battery life by:
1. Using the AC adapter to plug the XM70 device into an external power source.
  2. Manually or auto-suspend device operation as often as is practical
  3. Reduce the backlight brightness setting
  4. Turn off any wireless functionality ( Wi-Fi, Bluetooth or GPS) when not in use

## Screen OFF Function

To adjust Screen Off function (device suspend mode):

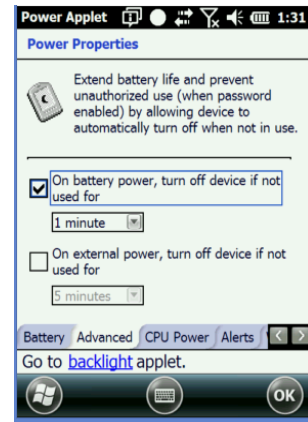
1. Tap **Settings, system** on the Windows Mobile **Start** desktop.



2. Tap **Power** on the Windows Mobile **Settings** desktop.



3. Tap **Advanced** on the **Power**
4. Check **On battery power**.
5. Select the preferred length of inactivity before activation of the screen off power saving function from the **pull-down menu**. Shorter *off* delays will increase battery power conservation.
6. Check **On external power**.
7. Repeat Step 5.
8. Tap **OK**.



## Backlight/Brightness

### To adjust backlight off delay function:

1. Tap **Settings** (icon) on the Windows Mobile **Start** desktop.
2. Tap **System** (folder) on the Windows Mobile **Settings** desktop.
3. Tap **Backlight** (icon) on the Windows Mobile **System** desktop.

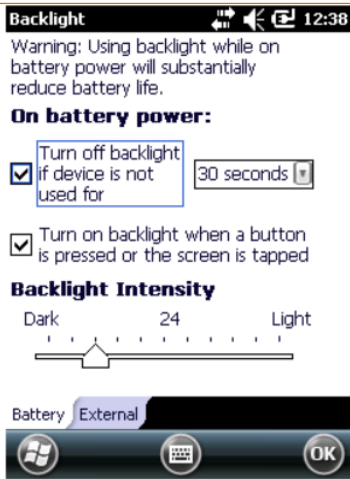


4. Check the **“Turn off the backlight if device not used for”** box and select the preferred length of inactivity before activation of the screen off power saving function from the pull-down menu. Shorter *off* delays will increase battery power conservation.

### To adjust backlight brightness function:

1. Tap **Settings** (icon) on the Windows Mobile **Start** desktop.
2. Tap **System > Backlight** (tab)
3. Adjust the brightness level using the sliding bar.



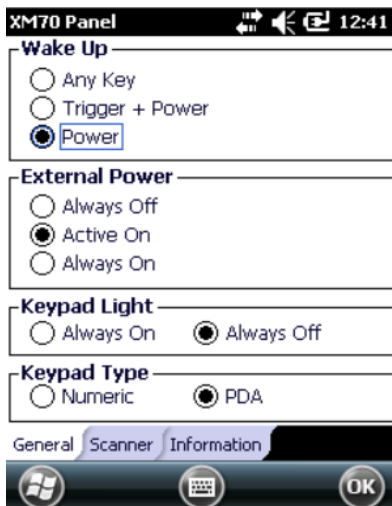


## XM70 Panel

The XM70 Panel located in “Start”, “Settings,” “System” provides customization of “Wake Up”, “external Power,” “Keypad Light” and “Keypad Type” along scanner beep and vibrate settings and operating system and ROM build information.

### To adjust key light duration function:

1. Wake Up – default set to the power button.
2. External Power – to power external MSR or RFID
3. Keypad Light – illuminates the keypad.
4. Keypad Type – Selects PDA or numeric style.



**Numeric style keypad****PDA style keypad**

## ***Opening and Removing Applications (applies only to user-installed programs)***

**To open an application:**

Tap the desired application from the Windows Mobile desktop.

**To remove a program:**

1. From the **Start** screen, tap **Settings** (icon) > **System** (folder) > **Remove Programs** (icon).
2. From the **Remove Programs** screen, select (tap) the program to be removed.
3. Tap the **Remove** button.

## Resetting the XM70

### ***Soft Reset***

In most situations a soft reset restarts the device and saves all stored records and entries. However, any data that has not been saved will be lost during a soft reset.

#### **To perform a soft reset on numeric keypad device:**

1. Simultaneously press the blue key and the power button until the display goes dark.
2. Release both the blue key and the power button.



**To perform a soft reset on PDA keypad device:**

1. The PDA keypad method requires a Download of a registry key from [support@janam.com](mailto:support@janam.com) .
2. Select PDA Keypad in the XM70 panel (see next page for details)
3. Simultaneously press the F4 key and the power button until the display goes dark.
4. Release both the F4 key and the power button.

**Alternate method for performing soft reset:**

1. Remove the battery door from the back of the unit.
2. Replace the battery door.

**Important note on the Battery Door**

*XM70 mobile computers feature a **battery door removal detection switch**. This is designed to protect against data loss if the battery is removed during data collection or processing. The system will not fully operate when the battery cover is removed. As a result of this feature, XM70 devices automatically create a safe state until the battery cover is secured, meaning a device will power-down until the battery door is closed. It will recall and resume from the user's most recent screen when the battery door is fully in place.*

## Hard Reset

A hard reset returns the XM70 to factory settings, removing ALL applications and data from the device except those installed to the Application folder. Be sure that all data is backed up before performing a hard reset.

### To perform a hard reset on numeric keypad device:

1. Simultaneously press the yellow key and the power button and hold for five seconds.
2. When the Janam logo appears on the display, release both the yellow key and the power button.
3. Perform touch-screen calibration.



### To perform a hard reset on PDA keypad device:

1. Simultaneously press the F2 key and the power button and hold for five seconds.
2. When the Janam logo appears on the display, release both the F2 key and the power button.
3. Perform touch-screen calibration.



**Alternate method for performing hard reset:**

1. Remove the battery door from the back of the unit.
2. Remove and replace the battery
3. While holding the arrow-up key located on the keypad, press the power button and continue to hold until prompted to proceed yes or no.

**Important note on the Battery Door**

*XM70 mobile computers feature a **battery door removal detection switch**. This is designed to protect against data loss if the battery is removed during data collection or processing. The system will not fully operate when the battery cover is removed. As a result of this feature, XM70 devices automatically create a safe state until the battery cover is secured, meaning a device will power-down until the battery door is closed. It will recall and resume from the user's most recent screen when the battery door is fully in place.*

## Barcode Scanning

### Demonstration and Setup

To run the demo:

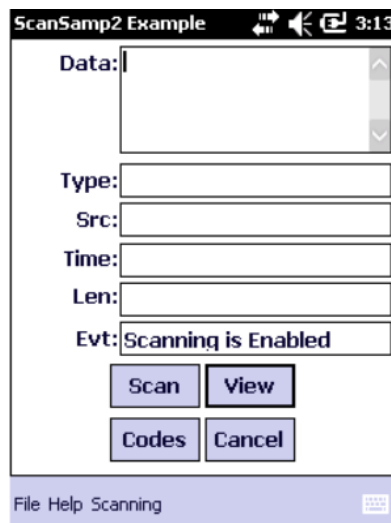
Tap the **Start** menu, then scroll down and tap scan.



Tap ScanStamp2.



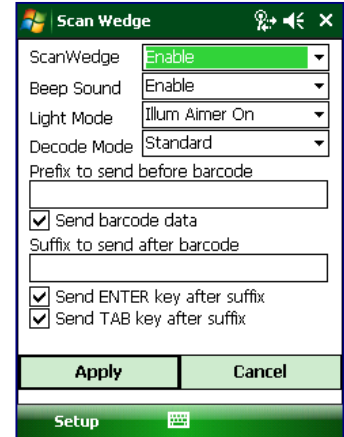
Tap "Codes" to enable or disable select symbology types; tap "Scan" to activate scanner and decode barcodes



## Enabling the ScanWedge feature

When the ScanWedge feature is enabled, data can be entered into the specified application by opening the application on the handheld and scanning a barcode.

1. Go to **Start menu > Scan Folder> ScanWedge.**
2. Select **Enable** from the *ScanWedge* menu.
3. Tap **Setup > Symbology Config.** You can then select **enable all** to enable every type of barcode or manually select the barcode symbologies you need.
4. Tap **OK.**



**Note:** The ScanWedge function will be disabled if manual scanning is initiated either by a command API or by using the Janam Barcode Test program.



## Entering Data

### *Entering information on the XM70*

You can enter data into your Janam mobile computer several ways:

Type	How
Barcode scanning	Use the barcode scanning to capture data and images.
Typing	Use input panel to enter typed text by tapping keys on the onscreen keyboard or by using handwriting recognition software.
Writing	Use the stylus like a pen to write directly on the screen.
Drawing	Use the stylus like a pen to draw a picture directly on the screen.
Synchronizing	Use ActiveSync to exchange information between your PC and device. For more information on ActiveSync, see chapter 11.

### *Using the Barcode Scanner*

You can capture data and images by scanning barcodes into the handheld computer. See chapter 5 for details.

### *Using the Input Panel*

The input panel provides access to the various input methods available on your device.



By default, the input panel appears on the menu bar. The icon indicates which input method is currently selected. The input selector arrow opens a list of available input methods.

To show or hide input panel, tap the input panel icon on the menu bar.

## Keyboard Shortcuts

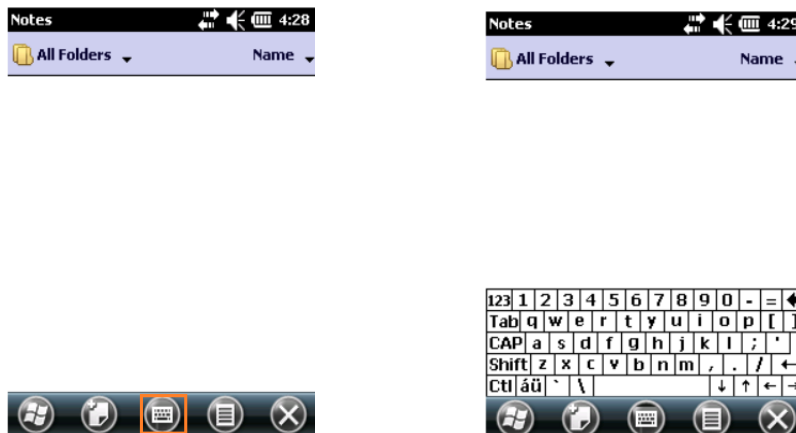
When you use the onscreen keyboard, you can use shortcut keys as an alternative to menu commands when working in programs on your device.

To	Tap	To	Tap
Copy the selected text	CTRL+C	Undo the last action	CTRL+Z
Cut the selected text	CTRL+X	Redo the last action	CTRL+Y
Paste the text	CTRL+V	Make the selected text bold	CTRL+B
Close a program	CTRL+Q	Make the selected text italic	CTRL+I
Open a new file	CTRL+N	Make the selected text underlined	CTRL+U

## Using the Onscreen Keyboard

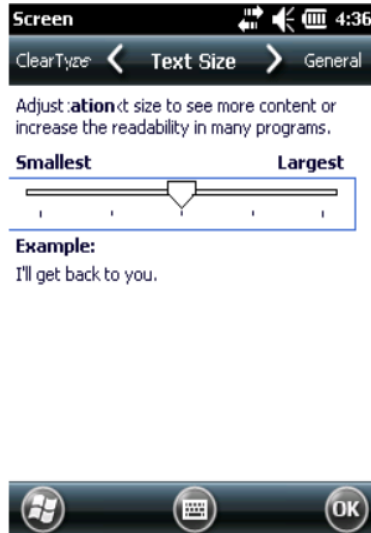
### To enter text:

You can enter text by tapping keys on the keyboard that is displayed on the screen. The onscreen keyboard is available when text entry is possible.



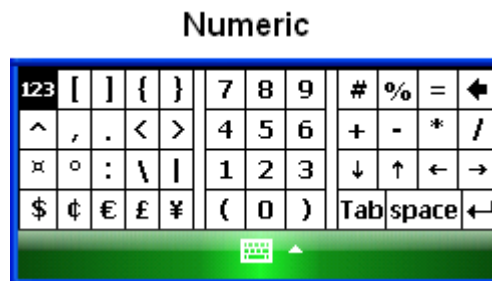
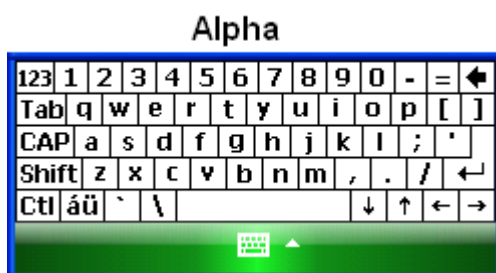
**To adjust the size of text on the screen:**

1. Tap **Start** menu > **Settings** > **System** tab > **Screen** > **Text Size** tab.
2. Move the **slider** to increase or decrease the text size.



**To change input panels:**

1. The standard alpha keyboard is the default.
2. For numeric, tap on **123** keyboard in the upper left corner of the main keyboard.
3. For international, tap on **áü** key in the lower left corner of the alpha keyboard.



**Importing Data**

If you have data stored in computer applications (e.g. spreadsheets, databases), or if you want to import data from another device, you can transfer the data to your Janam XM70 handheld computer without having to key it in manually. See chapter 7 for more details on how to transfer files and applications.

## Exchanging and Updating Data

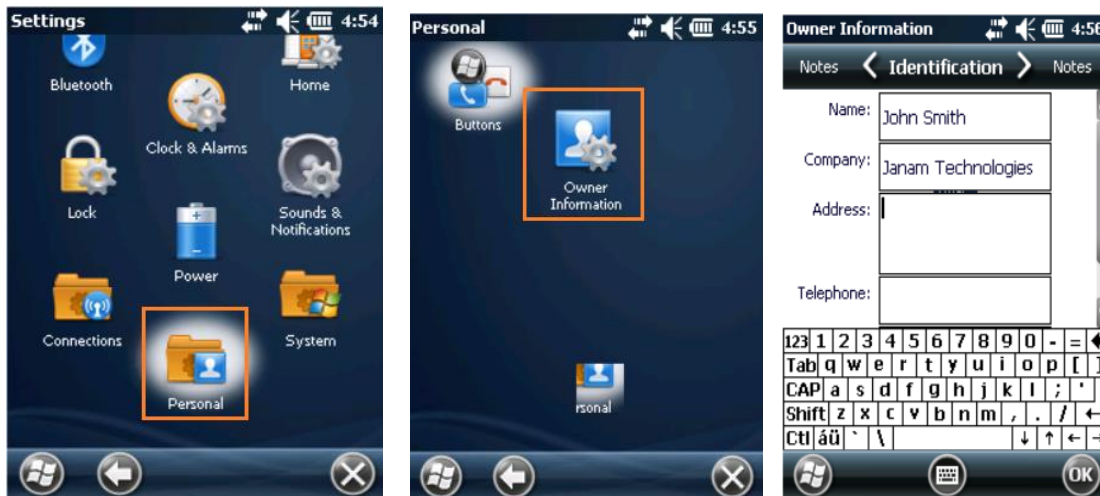
ActiveSync and Windows Mobile Device Center software let you synchronize data between an XM70 and a PC. To synchronize data, you must connect your XM70 and PC directly using a cable or cradle or use a modem or network.

### Creating a User Profile

You can create a user profile to load data into a Janam XM70 without associating that data with a user name.

#### To create a user profile:

1. Tap **Start** menu > **Settings** > **Personal** tab.
2. Choose **Owner Information**.
3. Enter **identification**, **notes** and **display** information.
4. Tap **OK** to save changes.

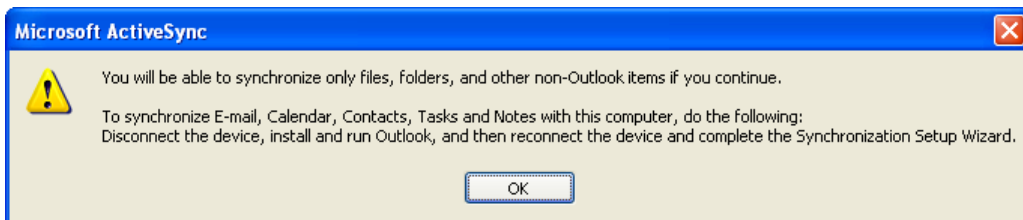


## Managing Partnerships

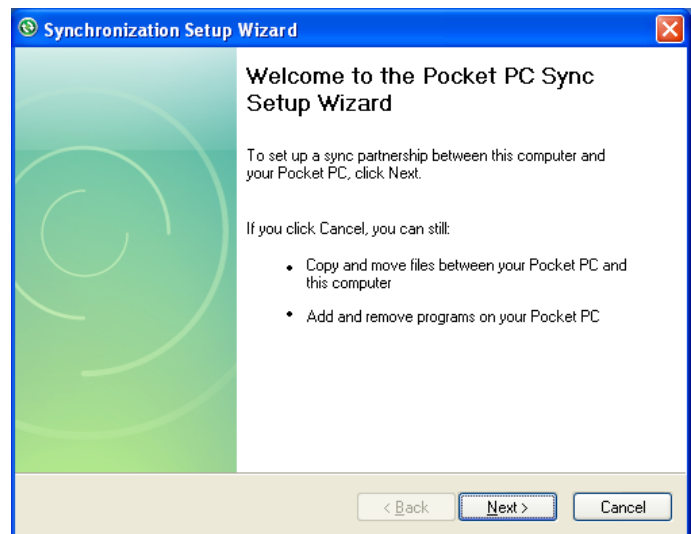
There are two types of partnerships that you can create with your Janam XM70. You can automatically synchronize the files on your handheld device with your PC when you start your device or you can establish a guest connection and manually copy the files you want to synchronize.

### To set up a partnership to automatically sync files:

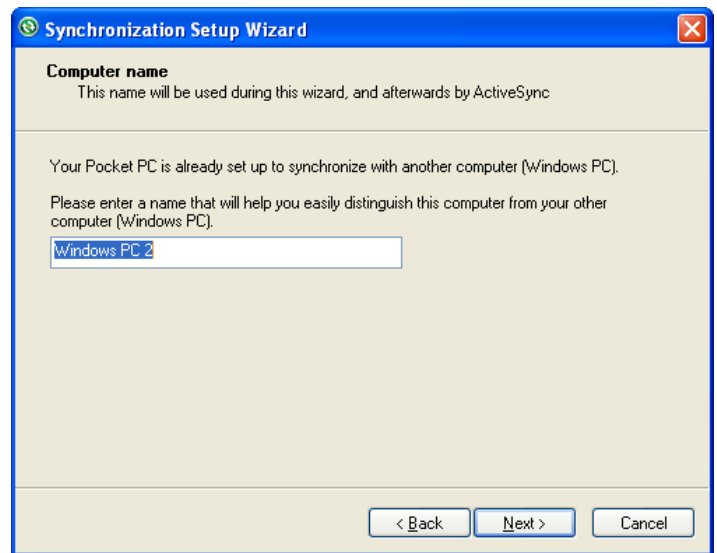
1. On your PC, select **Start** menu > **Programs** > **ActiveSync. Microsoft ActiveSync Version 4.5.0 (Build 5096)** is used in this manual.
2. Connect your **Janam XM70 to your PC.**
3. **Microsoft ActiveSync** dialog box prompts. Tap **OK** to proceed.



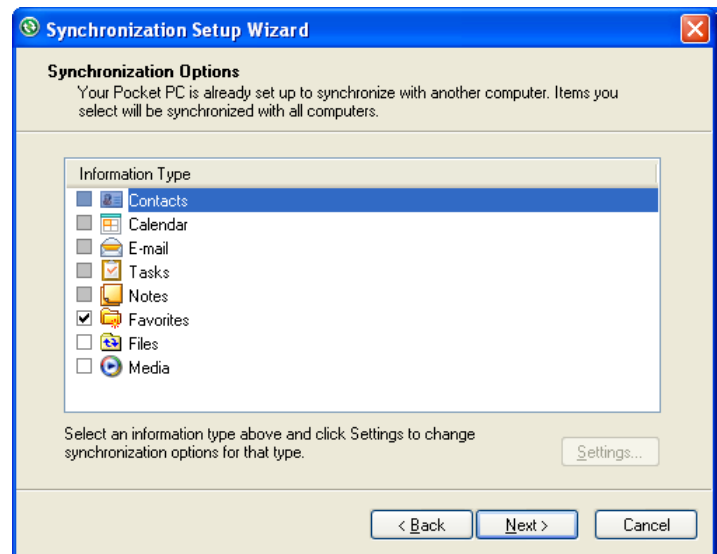
4. **Synchronization Setup Wizard** window appears. Tap **Next** to setup the partnership connection.



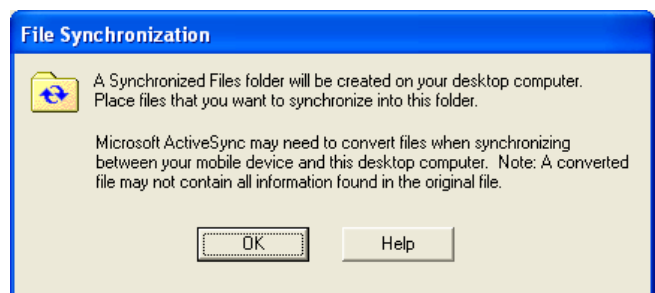
- If the device has already been set up to synchronize with another computer, the **Synchronization Setup Wizard (Computer name)** window will appear. Use the default name or enter a new name. Then tap **Next** to proceed.



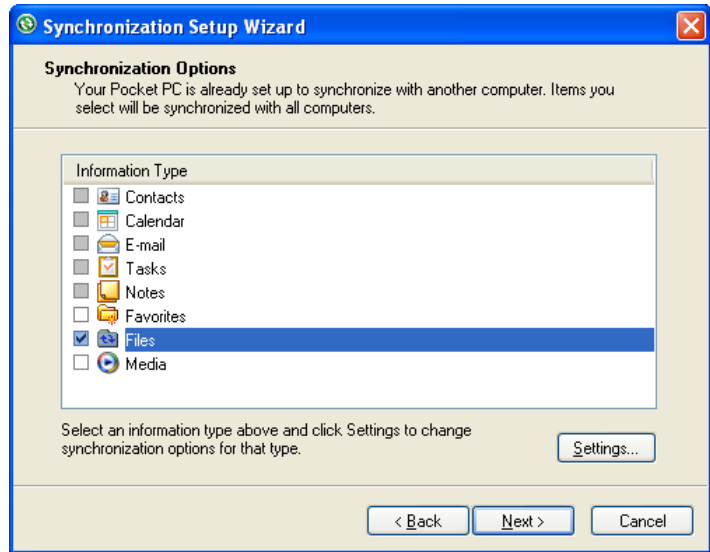
- Select the **Files** you want to automatically sync between your mobile device and your computer. Then tap **Next**.



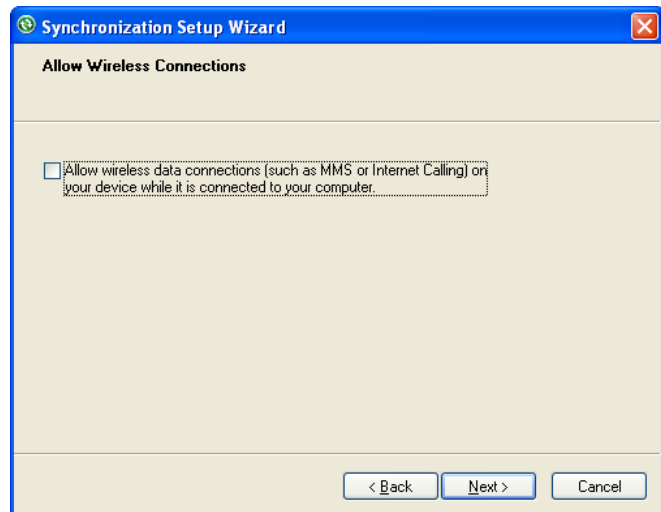
- Note: when you select **Files**, an additional screen appears (shown below) with further information. Read carefully before proceeding, because your files may be converted. Tap **OK** proceed.



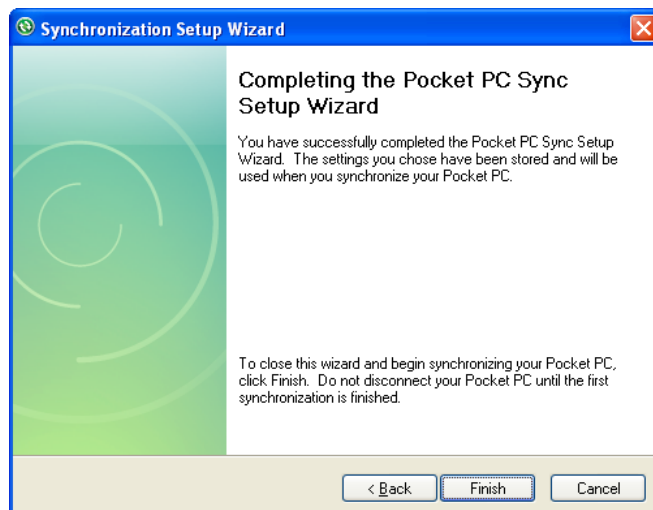
8. **Synchronization Options** window appears again. Tap **Next** to proceed.



9. **Allow Wireless Connections** window appears. Check the checkbox for Allow wireless data connections.



10. **Completing the Pocket PC Sync Setup Wizard** window appears. Tap **Finish**.

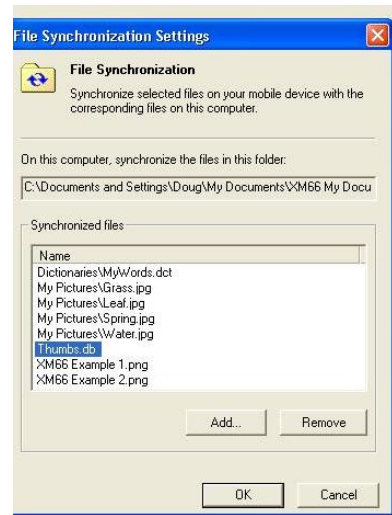


11. Your **partnership** setup is completed. **Microsoft ActiveSync** window appears with the device name **XM70** (in this example) and status shows as **Synchronized**. File synchronization will be carried out automatically when there is file added or remove from the **\My Document** folder of the device.





- To add/remove files to the device, tap on the **Microsoft ActiveSync** window. **Synchronization Settings** window appears. Tap on **Add** button to add files to **\My Documents** folder of the device and **Remove** button to delete files **\My Documents** folder of the device.



- After adding and removing files, automatic file synchronizing is performed.

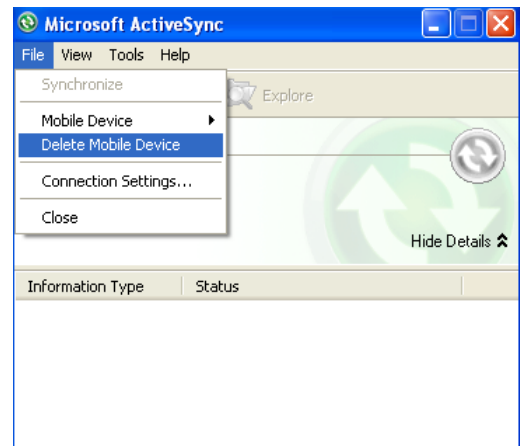


- After synchronization is completed, the status of Microsoft ActiveSync window changes from **Synchronizing** to **Synchronized** again.

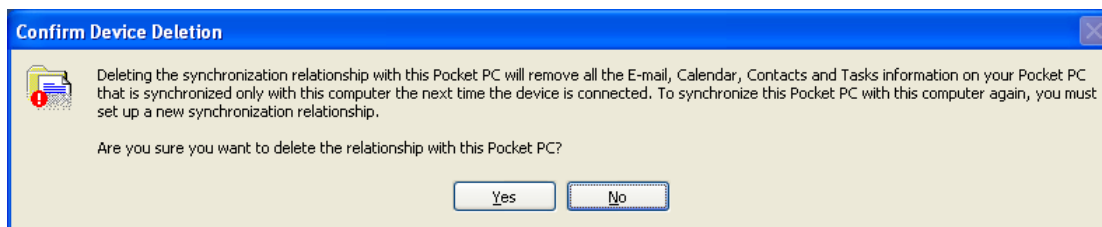


**To delete a partnership:**

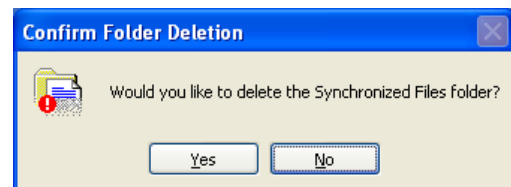
1. Unplug USB cable to disconnect the USB ActiveSync connection between the device and the PC.
2. Go to **File > Delete Partnership** in the ActiveSync manager.



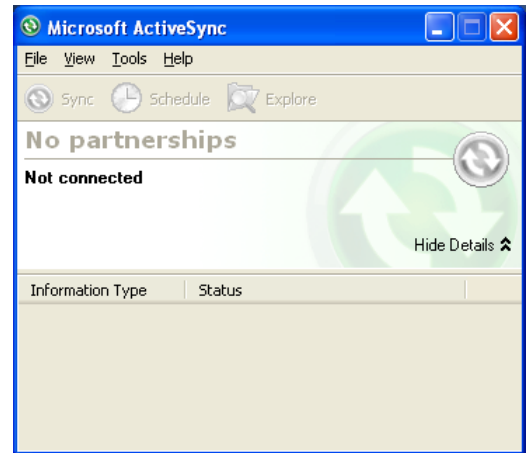
3. Click **Yes** when confirmation screen appears.



4. If there is a Synchronized Files folder, confirmation for folder deletion screen will appear. Click **Yes** to proceed.

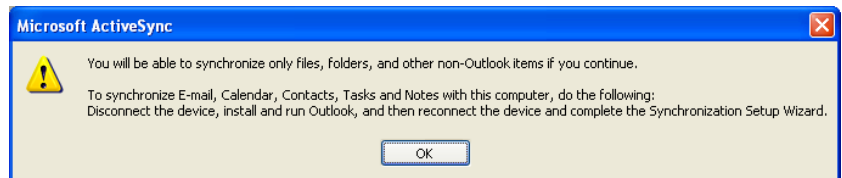


5. Microsoft ActiveSync window shows No partnerships.
6. You will need to **re-establish the partnership** when you connect your Janam XM70 to your PC, or you will need to connect as a guest.

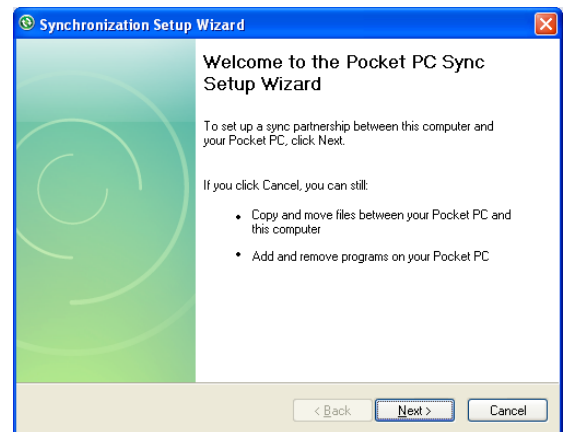


To set up a guest partnership:

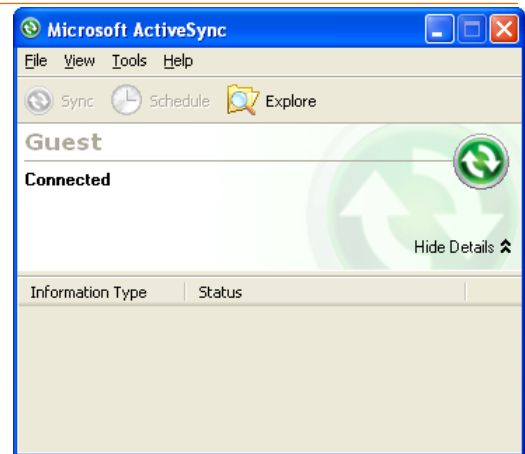
1. Connect your **Janam XM70** to your PC.
2. **Microsoft ActiveSync** dialog box prompts. Tap **OK** to proceed.



3. **Synchronization Setup Wizard** window appears. Tap **Cancel** to setup a **Guest** connection.

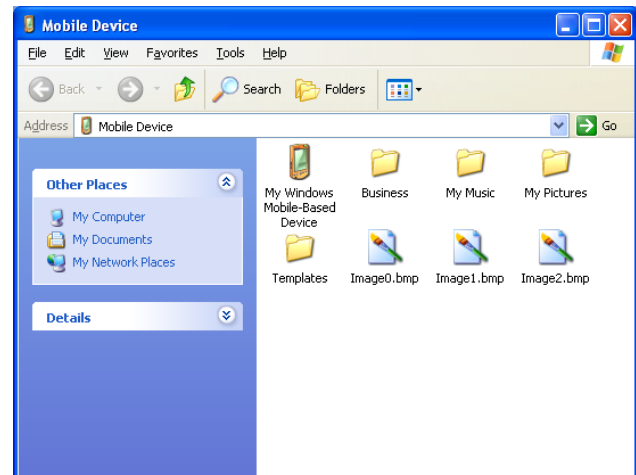


4. The guest connection is established, as shown.
5. Select **Explore** to manually copy the files on your handheld to your desktop computer.



Windows Explorer will appear with the folders and files on your mobile device.

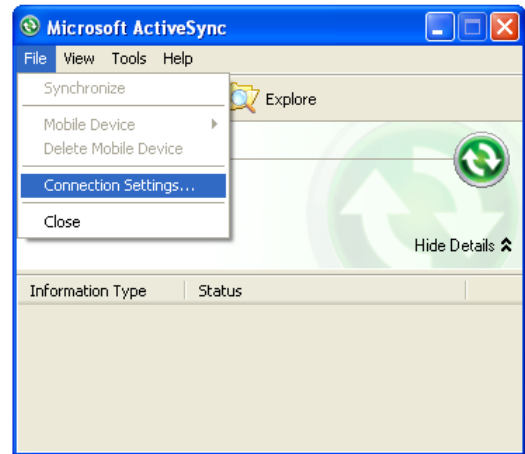
6. Select the **file or file(s)** you want to move or copy.
7. Choose **copy files** and select a **destination folder** on your PC.



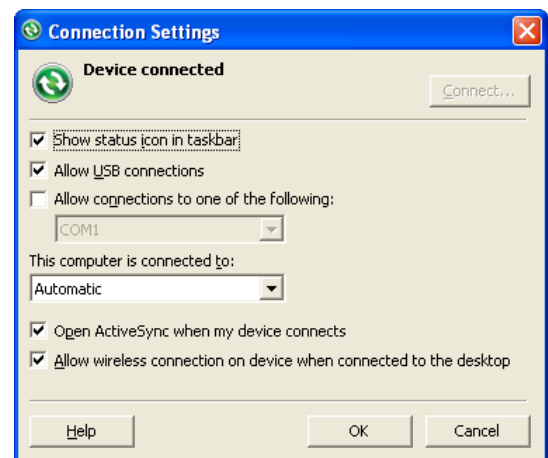
## Partnership Settings

To change partnership connection settings:

1. Click the **ActiveSync icon** in your Windows system tray (bottom right corner of taskbar).
2. Choose **File > Connection Settings** from the ActiveSync manager menu.



3. The Connection Settings window appears. Tap **OK**.



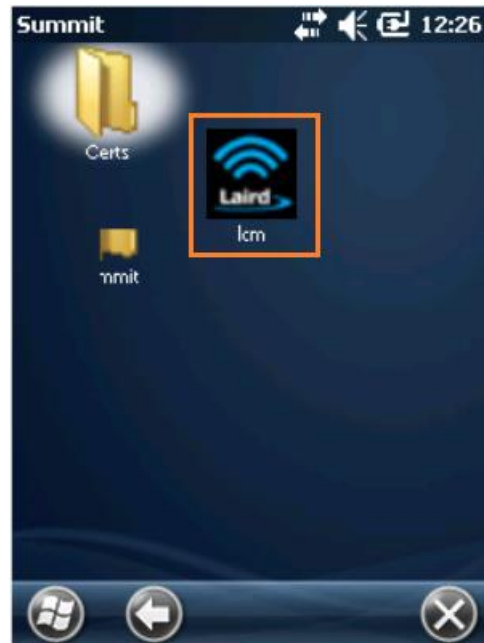
# WLAN 802.11 Wireless Configuration

## Wireless Local Area Network Access

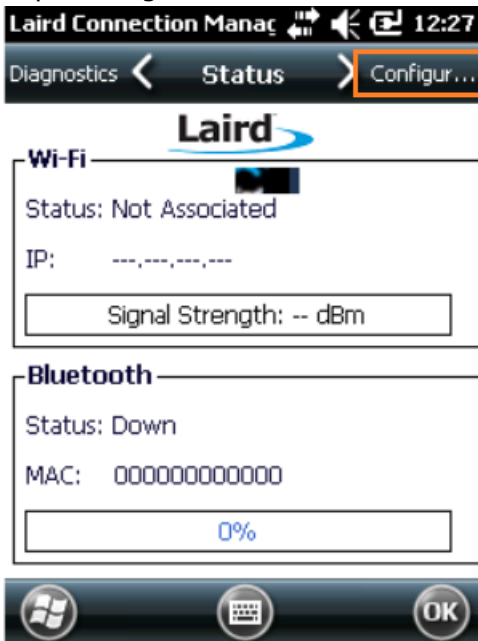
Tap the Summit folder.



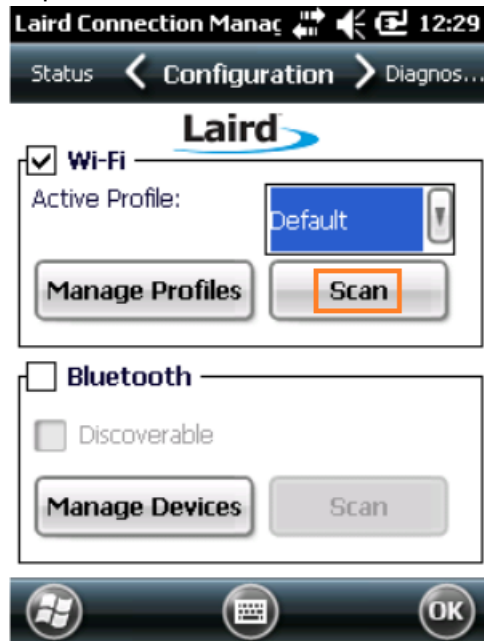
Tap "lcm."



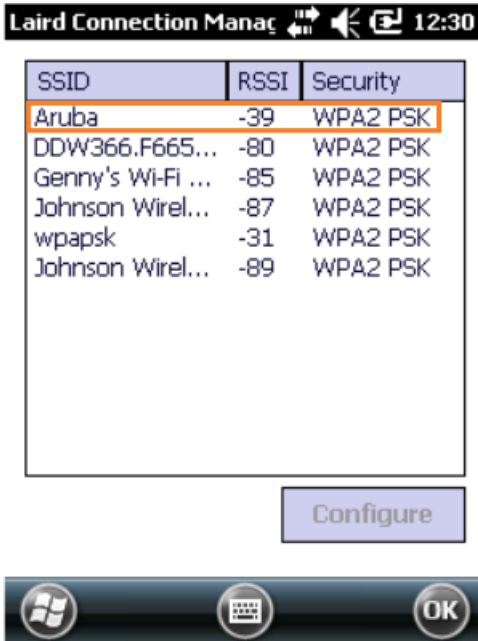
Tap "Configuration."



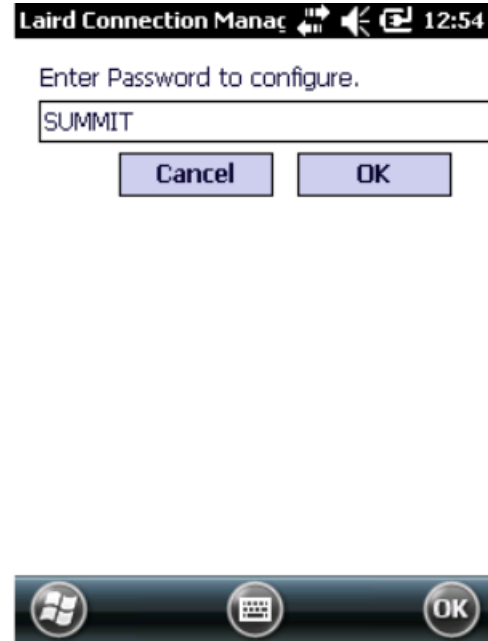
Tap "Scan."



Tap your SSID.



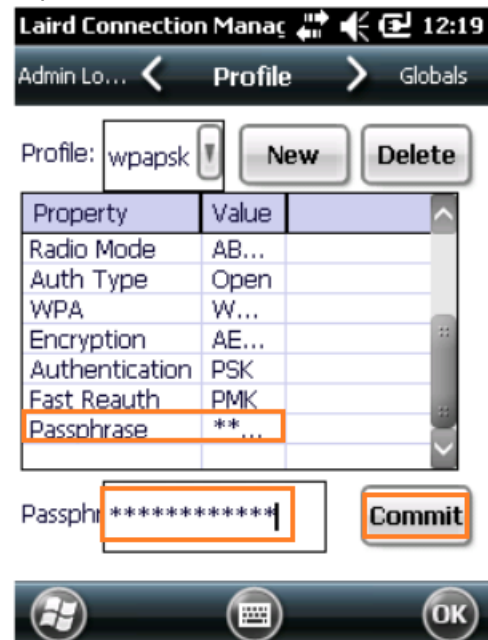
Enter the default password "SUMMIT."



Verify A/P broadcast capabilities and tap "Yes."



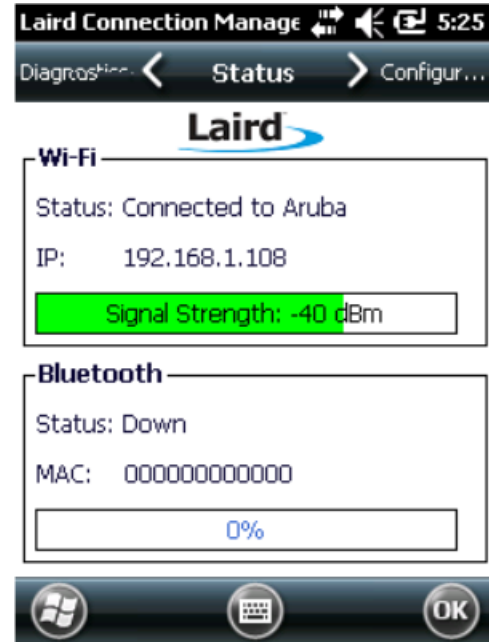
Tap "Passphrase" and enter the key, then tap "Commit" and "OK."



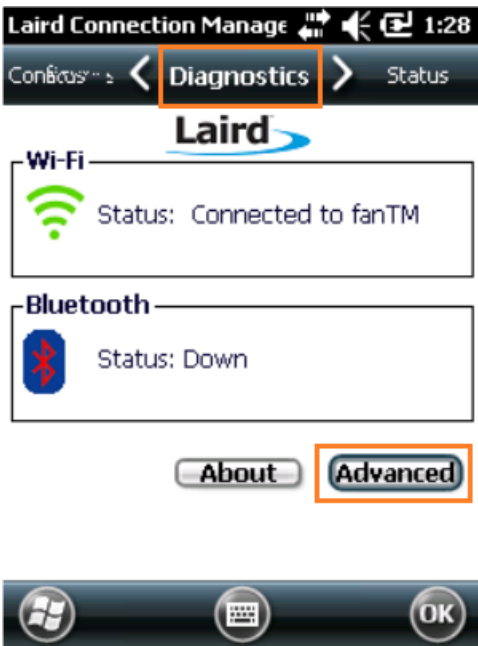
Tap "Configuration" then select your profile and "OK."



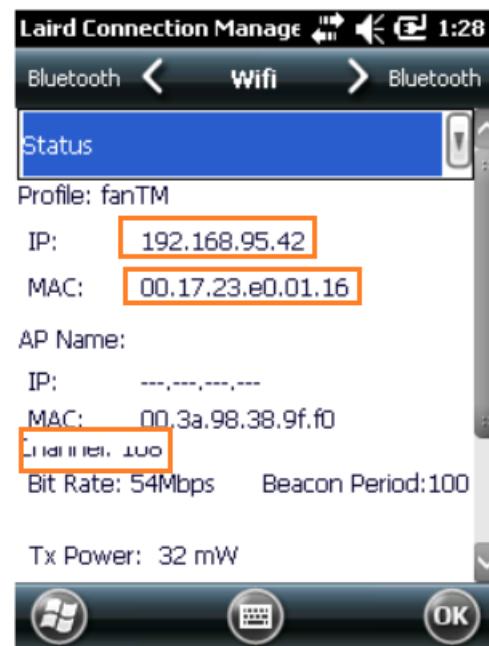
Connected.



Tap "Diagnostics" and "Advanced."

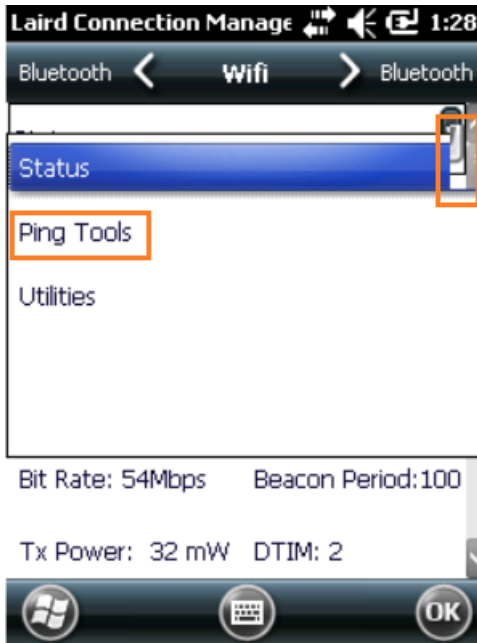


Shows the current WiFi channel IP and MAC address of the XM70.





Tap the drop down for "Ping Tools."



## Using Bluetooth

### Overview

Bluetooth is a short-range wireless communications technology. Devices with Bluetooth capabilities can beam to exchange information over a distance of about 10 meters (30 feet).

Unlike infrared, you don't need to line up the devices to beam information with Bluetooth. You can even beam information to a device in a different room, as long as it's within range.

Bluetooth uses:

- Beam information (e.g. files, appointments, tasks, contact cards) between devices that have Bluetooth capabilities
- Use a Bluetooth service. Once you connect to another device or computer using Bluetooth, you can locate and use any of the services available on that device.

### Bluetooth Configuration

Tap Bluetooth.



Tap "Mode" and select "Turn on BT."



Tap "Add new device."



Select your device and tap "Next."



Enter BT Passcode.



Connected.

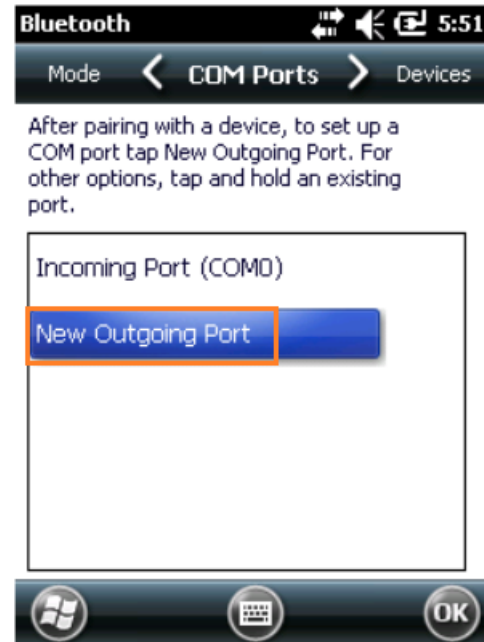


For Serial Port Profile tap "COM Ports."



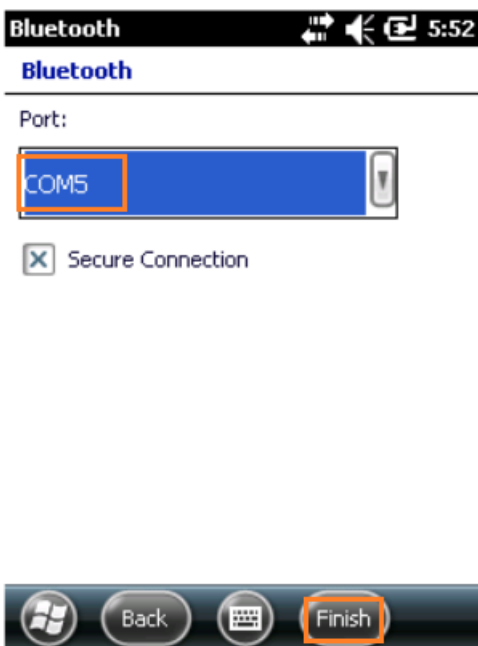
Tap Add new device to search for other Bluetooth devices. Tap on a device to modify its settings.

Add "new Outgoing Port."



After pairing with a device, to set up a COM port tap New Outgoing Port. For other options, tap and hold an existing port.

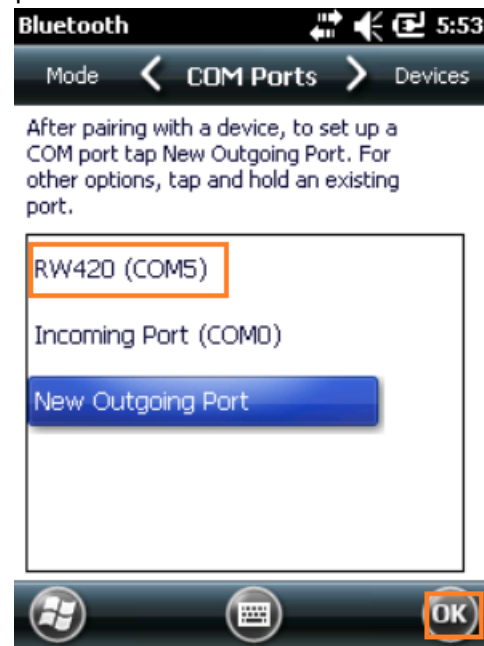
COM 5 and 6 are available ports.



Port:

Secure Connection

Configure your app to print on COM 5 and print.



After pairing with a device, to set up a COM port tap New Outgoing Port. For other options, tap and hold an existing port.

## Regulation and Maintenance

### **Regulatory information**


© Copyright 2016 Janam Technologies LLC. All rights reserved.

XM Series, XM70, Janam and the Janam logo are trademarks of Janam Technologies LLC. Other product and brand names may be trademarked or registered trademarks of their respective owners.

Janam Technologies LLC assumes no responsibility for any damage or loss resulting from the use of this manual. Janam Technologies LLC assumes no responsibility for any loss or claims by third parties which may arise through the use of this product. Janam Technologies LLC assumes no responsibility for any damage or loss caused by deletion of data as a result of malfunction, dead battery or repairs. Be sure to make backup copies of all important data on other media to protect against data loss.

**Important:** Please read the End User License Agreement for this product before using the device or the accompanying software program(s). Using the device or any part of the software indicates that you accept the terms of the End User License Agreement.

For additional information, visit [www.janam.com](http://www.janam.com), email [janamcare@janam.com](mailto:janamcare@janam.com), or call +1.877.JANAM.99.

 The CE mark on the product indicates that the system has been tested to and conforms with the provisions noted within the 1999/5/EC Electromagnetic Compatibility Directive.

For further information, please contact:  
Janam Technologies; 100 Crossways Park West, Suite 105; Woodbury, NY 11797.

Janam Technologies shall not be liable for use of our product with equipment (i.e., power supplies, personal computers, etc.) that is not CE marked and does not comply with the Low Voltage Directive.

### **FCC and Canadian Compliance**

 Tested to Comply with FCC Standards.

FOR HOME OR OFFICE USE

XM70 mobile computers meet or exceed all applicable standards and have been manufactured to the highest level of quality.

**Warning:** Changes or modifications to this unit not expressly approved by the party responsible for compliance could void the user authority to operate the equipment.

## ***Care and Cleaning of Terminals***

When needed, clean the image engine window and the LCD display with a clean, non-abrasive, lint-free cloth. The terminal can be cleaned with a damp cloth.

## ***Waste Electrical and Electronic Equipment (WEEE) Information***

This product has required the extraction and use of natural resources for its production. It may contain hazardous substances that could impact health and the environment, if not properly disposed.

In order to avoid the dissemination of those substances in our environment and to diminish the pressure on the natural resources, we encourage you to use the appropriate take-back systems for product disposal. Those systems will reuse or recycle most of the materials of the product you are disposing in a sound way.



The crossed out wheeled bin symbol informs you that the product should not be disposed of along with municipal waste and invites you to use the appropriate separate take-back systems for product disposal.

If you need more information on the collection, reuse and recycling of these systems, please contact your local region's waste administration. You may also contact your supplier for more information on the environmental performances of this product.

## ***Battery Warning***



### **CAUTION!**

**RISK OF EXPLOSION IF BATTERY IS REPLACED BY AN INCORRECT TYPE.  
DISPOSE OF USED BATTERIES ACCORDING TO THE INSTRUCTIONS.**

Use only Janam-approved batteries such as the BA-XP-1 and recharge batteries using only Janam-approved chargers. Use only easily accessible wall outlets that are reached with the length of the supplied power cables.

The standard charger provides an easy and convenient way to charge the device. You can purchase the charger through an authorized dealer. Visit Janam's website [www.janam.com](http://www.janam.com) for information.

## **General Information**

1. Before using the standard charger, read all instructions and warnings.
2. Please retain these instructions for future reference.



### **Warning**

1. No user serviceable parts inside. Do not open the charger. The charger is not serviceable.
2. If found any damage or cracking on the enclosure of the charger, do not use the charger. This charger shall be disposed of.
3. Do not short-circuit the output terminals of the charger.
4. The charger is for indoor use only. Do not expose the charger to moisture or place the charger at location which could subject to water spillage.
5. The charger is designed for use with this product only. Do not use this charger for other purpose.

## **Operating Instructions**

1. Connect the power cord to the charger before plugging the charger into an outlet.
2. After use, always unplug the charger from the outlet.
3. Ensure that your local power supply system complies with the technical data of the standard charger.

For more battery safety and charger safety guidelines, refer to the XM70 Quick Start Manual.